

PROJECT:

LOCATION:

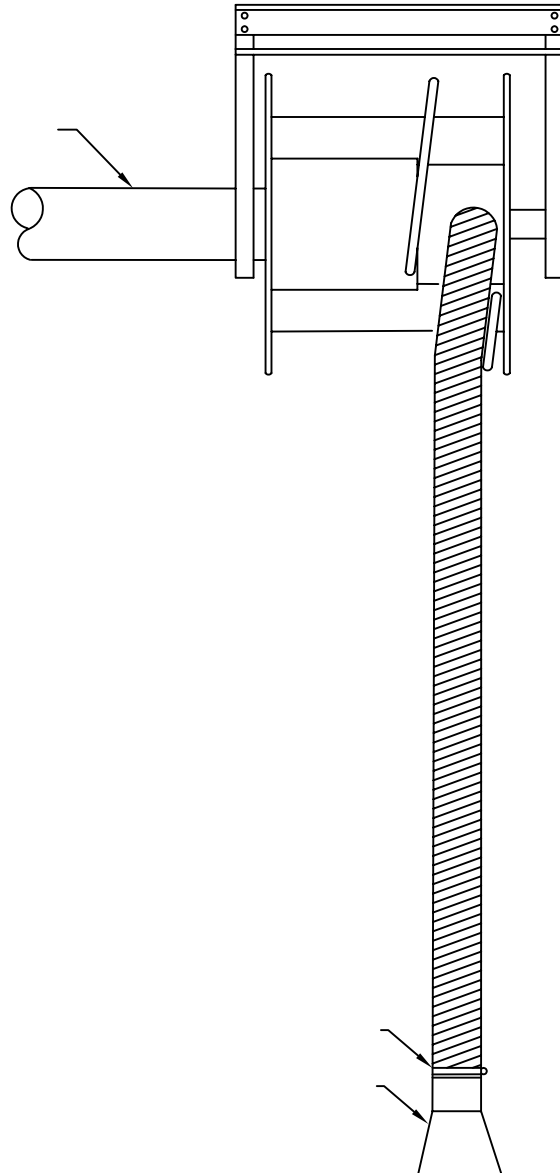
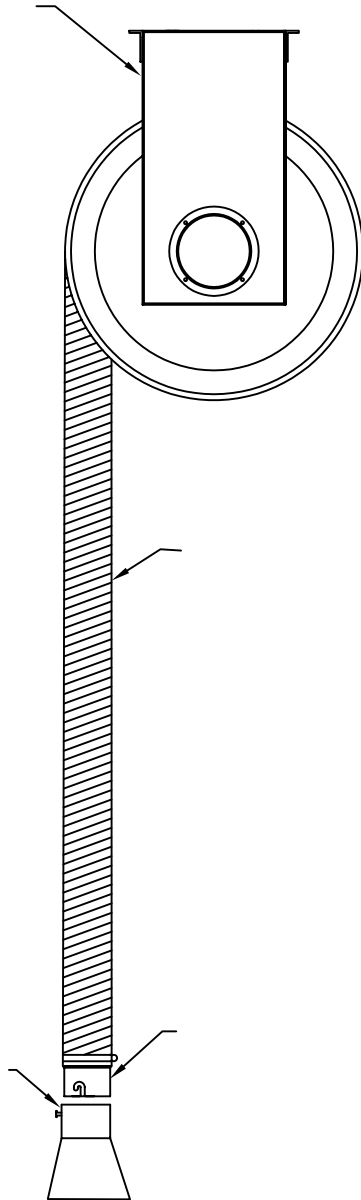
ENGINEER:

SALES ENGINEER:

ARCHITECT:

CONTRACTOR:

DATE:



NOTES

IN THE STORAGE POSITION, THE BOTTOM OF THE TAILPIPE ADAPTER SHOULD BE A MINIMUM OF 7' OFF THE FLOOR. TO OPERATE, PULL THE TAILPIPE ADAPTER DOWN TO THE DESIRED POSITION, PULL THE HOSE AN ADDITIONAL AMMOUNT TO SET THE REEL LOCK INTO PLACE AND PLACE THE ADAPTER ON THE VEHICLE EXHAUST PIPE. WHEN STORING THE SYSTEM, TUG HOSE SLIGHTLY TO UNLOCK THE REEL AND ALLOW HOSE TO SLOWLY RETRACT.