

PROJECT:

LOCATION:

ENGINEER:

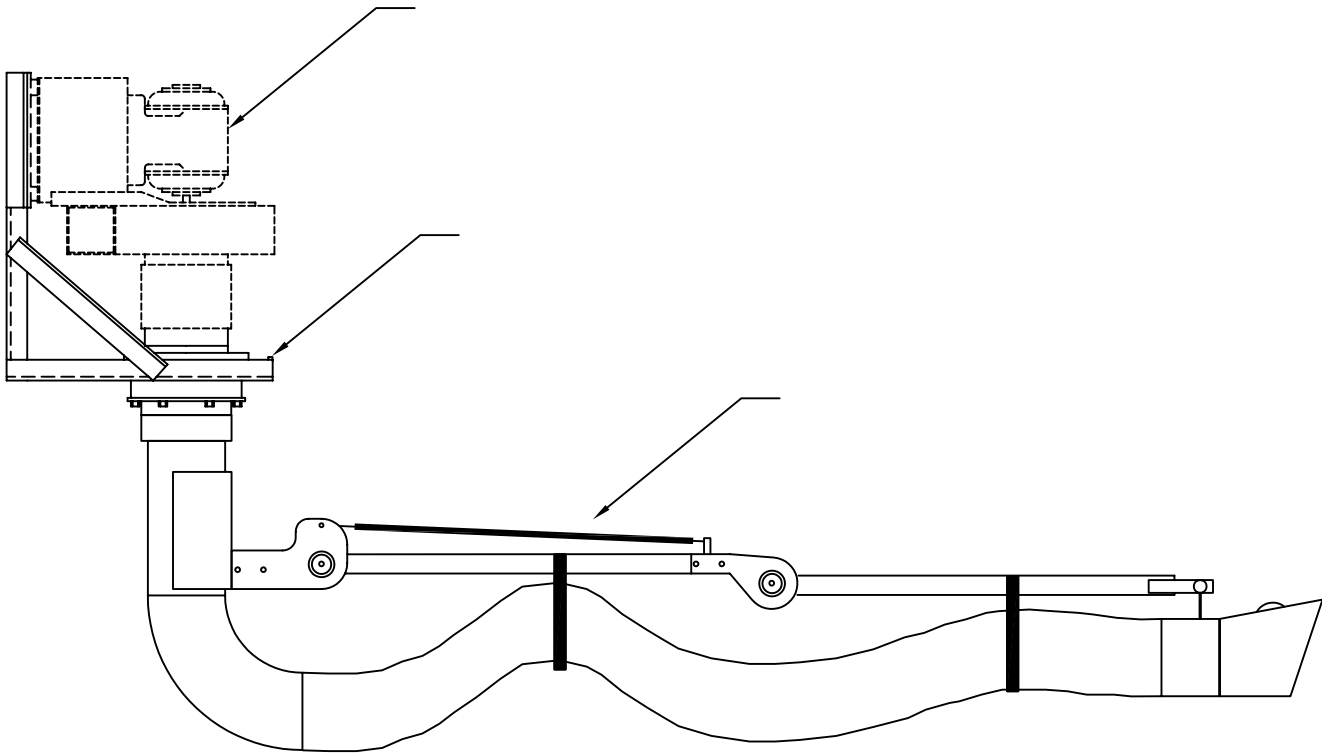
SALES ENGINEER:

ARCHITECT:

CONTRACTOR:

DATE:

ALL DIMENSIONS ARE IN INCHES



NOTES

Frame constructed of 1/8" x 1-1/2" x 1-1/2" steel angle.  
Contains pre-drilled fan mounting holes and 360 degree swivel.