



**11900 Riverwood Drive
Burnsville, MN 55337**

Phone: 952-894-6637

Fax: 952-894-0750

Email: info@ventaire.com

Website: www.ventaire.com

PRODUCT GUIDE FOR

Ventaire

HRA-DHRA Automatic

Hose Reel

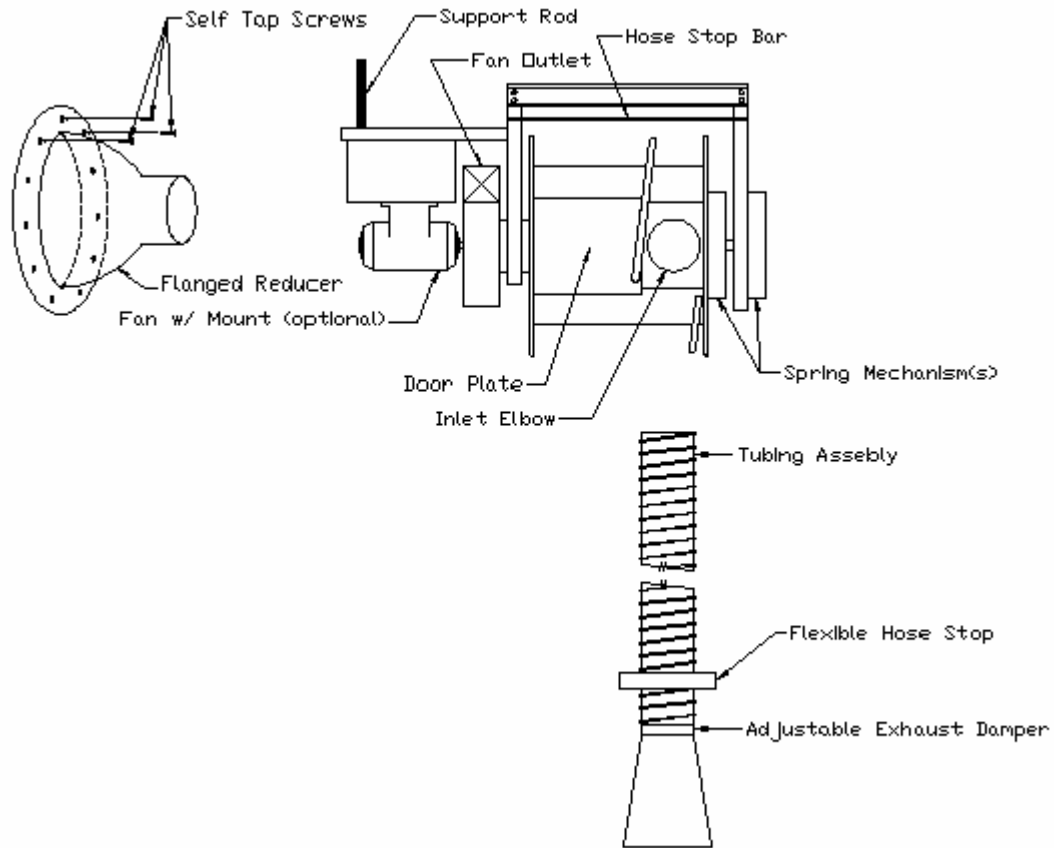


FIG 1

INTRODUCTION

1. Prior to installation inspect all of the components received for shipping damage. If damage occurred contact your Ventaire representative for assistance.
2. Read **ALL** the instructions before proceeding with any installation, operation, or maintenance.

INSTALLATION

CAUTION: Reel is under tension. Do not disengage the reel-latching mechanism unless you have a firm grasp on the reel.

1. Inspect the hose reel to make sure that no damage occurred while in transit.
2. Several mounting options are possible (See FIG 2 for details).
3. Raise the hose reel & fan (if applicable) off of the ground with a lifting mechanism (forklift, crane, etc.) and mount to a rigid structure at a desired location. Use at least 1/2" bolts through the holes in the corners of the hose reel base.

- The optional fan mount requires additional support. Run a ½” rod (not provided) down from a beam or rafter to the hole in the end of the black steel fan mount and secure.
- For reels w/o an integrated fan, fasten the flanged reducer to the reel outlet through the flange (not the cone).

CAUTION: Do not drill through the axle pipe when mounting reducer flange. This will restrict the reel movement.

- Connect the rigid duct to the flanged reducer on the reel outlet or integrated fan outlet using industry standard methods.

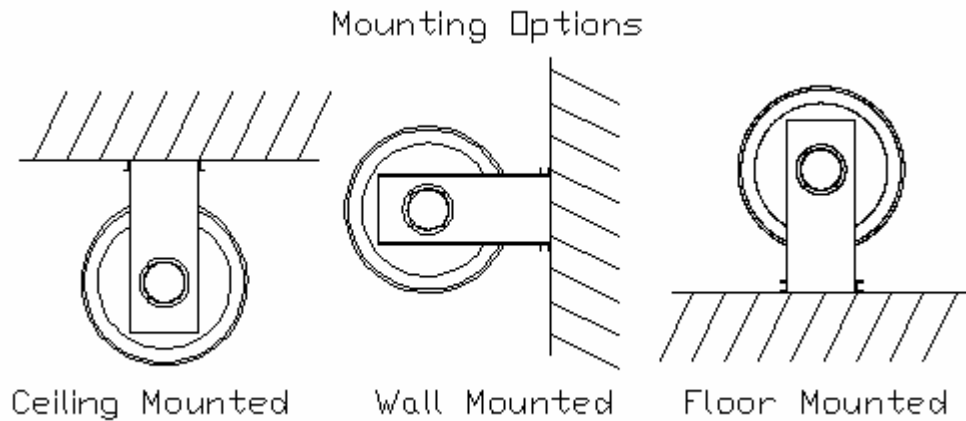


FIG 2

- Turn the reel until the spring is tight. Unwind the reel three turns, and engage the reel latching mechanism.
- Assemble the tubing assembly as shown in **FIG 3**

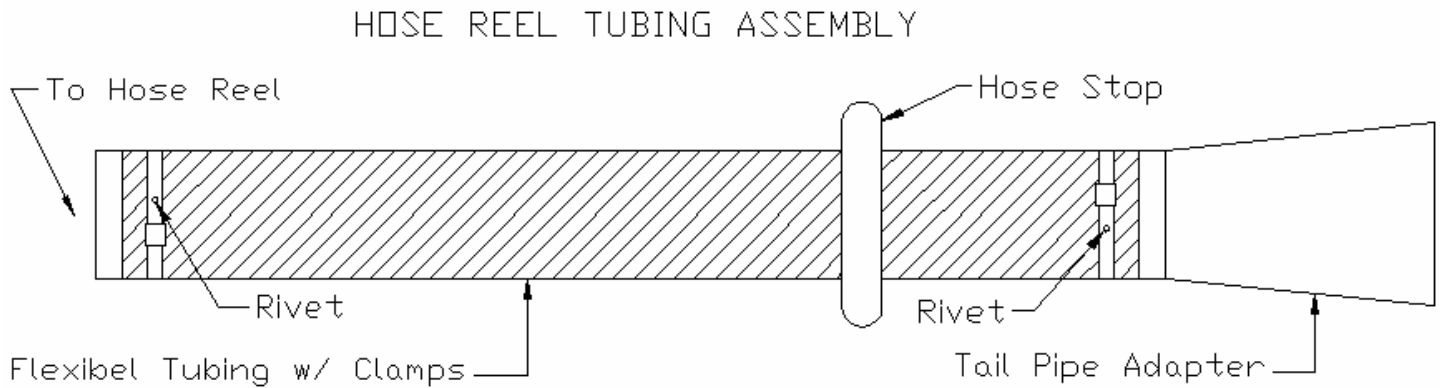


FIG 3

9. Fasten the Tailpipe adapter to the other end of the flexible tubing using the provided hose clamp. Only after the tension is adjusted, drill and rivet the connections through the hose clamps to ensure a rigid connection is established.

CAUTION: Do not over tighten flexible tubing stop. Over tightening the stop will cause the flexible tubing to separate.

10. Position the flexible tubing stop on the flexible tubing to the desired location. The hose stop enables the user to stop retraction of the flexible hose at a point where the user can easily pull down the hose when needed.
11. Fasten the flexible tubing to the inlet elbow using the provided hose clamp. To ensure a rigid connection is established, drill and rivet the connections through the hose clamps.

CAUTION: When adding wraps of tubing, be careful not to exceed the winding mechanism's spring capacity. Add just enough wraps of tubing to achieve the desired tension. Damage to the winding mechanism or flexible tubing will result if spring is over-tensioned.

12. Tug lightly on the end of the flexible tubing to release the reel-latching mechanism. Allow the tubing to roll slowly and smoothly onto reel. It is important to adjust the spring tension now. Adjust the spring tension by adding or removing wraps of tubing from the spool, one wrap at a time, until the desired tension is obtained. Add wraps to increase tension. Remove wraps to decrease tension. You will need to disconnect the hose clamp from step 9 to add or remove wraps of tubing.

WARNING: Do not over the tighten reel. This may permanently damage the spring in the winding mechanism. Ideally, the reel should be adjusted to wind up only as far as the desired height needed to reach the hose stop.

13. Once the spring tension has been adjusted, it is recommended to rivet the flexible tubing to the adapter through the clamp to ensure a rigid connection is established.

ELECTRICAL CONNECTIONS (For Optional Direct Mount Fan):

13. Before connecting the motor to the electric supply, check the electrical characteristics as indicated on motor nameplate to ensure proper voltage and phase. Remember that a single-phase motor is connected only to a single-phase supply of proper voltage (three phase, three phase supply).

CAUTION: A ground wire must be run from the blower motor housing to a suitable electrical ground such as a properly grounded metallic raceway or a ground wire system.

14. It is recommended that in every motor connection, an overload device be installed between the current supply and motor, to protect the motor from under-voltage conditions and motor overloads.
15. Follow the wiring schematic located on the fan motor for specific wiring instructions.

16. After electrical connections are completed, apply just enough power to start the unit. Be sure that the rotation of the wheel is correct as indicated by the directional arrows on the unit. Rewire until the correct rotation has been achieved.
17. Apply full electrical power. With the air system in full operation and all ducts attached, measure the current input to the motor and compare with the nameplate rating to determine if the motor is operating under safe load conditions.

OPERATION

Complete operation of the automatic hose reel can be accomplished in nine simple steps.

1. Grasp the cable or flexible tubing firmly near the adapter. Keep a firm hold until the latching mechanism is engaged.
2. Slowly pull down on the flexible tubing and bring the adapter down to the exhaust pipe. Allow for a few feet of slack in the tubing.
3. Slowly let the tubing retract until the latch mechanism on the reel engages. Be certain that the mechanism engages before proceeding to step 4.
4. Connect the adapter to the vehicle's exhaust pipe and release the flexible tubing.
5. Open any applicable air shut-off devices and turn on the exhaust fan.

After service on the vehicle is completed:

6. Close the air shut-off devices and turn off the exhaust fan.
7. Disconnect the tubing adapter from the vehicle's exhaust pipe.
8. Again, keep a firm grip because the reel is under tension. Tug lightly on the flexible tubing until the latch mechanism releases.
9. Slowly allow tubing to wrap onto reel until it reaches the desired height. Engage the latching mechanism.

MAINTENANCE

1. Routinely check the flexible tubing for wear to ensure proper airflow. If wear is apparent contact your Ventaire representative for replacement.
2. Periodically check all of the connections between the tubing, hose reel, and rigid duct for leakage. Tighten if necessary.
3. For the exhaust fan use the instructions provided by the manufacturer.

4. If the reel locks and ceases to unwind or rewind, discontinue use immediately and contact representative. Do not pull or jerk on hose.
5. Lubricate grease fitting on spring pack arbor annually.
6. For problems not covered in these situations please contact your representative.