



**11900 Riverwood Drive  
Burnsville, MN 55337**

**Phone: 952-894-6637**

**Fax: 952-894-0750**

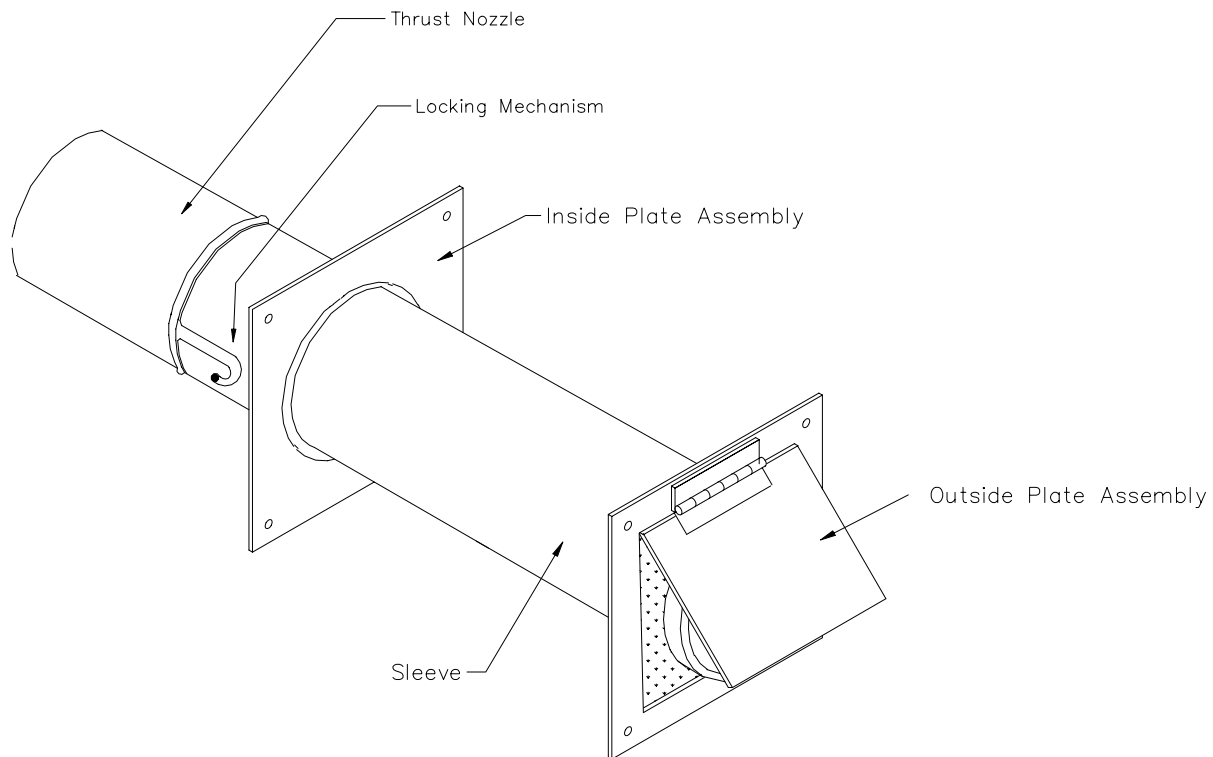
**Email: [info@ventaire.com](mailto:info@ventaire.com)**

**Website: [www.ventaire.com](http://www.ventaire.com)**

**PRODUCT GUIDE FOR**

**Ventaire DPA**

**Door Port Assembly**



**FIG 1**

**INTRODUCTION**

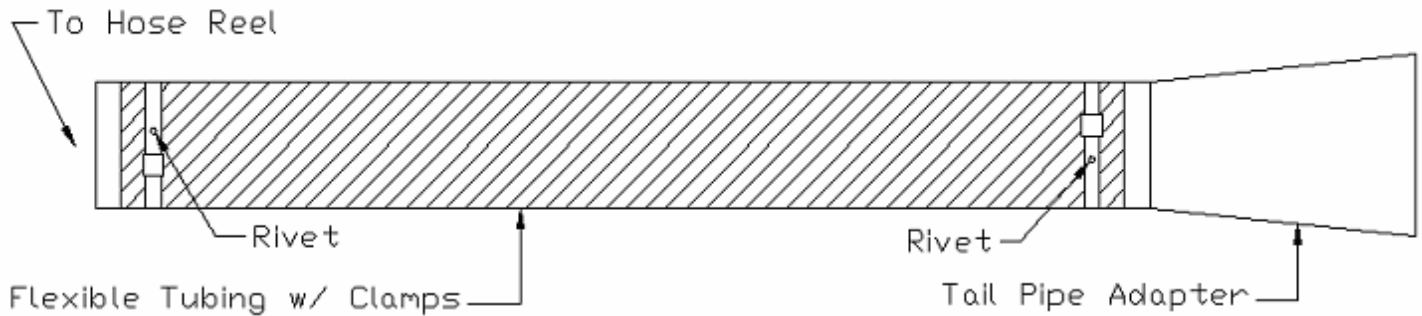
1. Prior to installation inspect all the components received for shipping damage. If damage occurred contact your Ventaire representative for assistance.
2. Read **ALL** the instructions before proceeding with any installation, operation, or maintenance.

**INSTALLATION**

1. Drill a hole through the wall or door 1/8”dia larger than the sleeve in the desired location for the recepticle.
2. Center the inside plate assembly over the interior hole in the wall or door.
3. Fasten the inside plate to the wall or door using the (4) mounting holes according to industry standard methods.
4. Insert the sleeve with the back plate assembly from the outside of building through the hole and inside the plate assembly.
5. Align the sleeve so that the sleeve protrudes to the inside of building perpendicular to the wall or door.
6. Fasten the outside plate to the wall or door using the (4) mounting holes using industry standard methods.

7. Assemble the thrust nozzle, adapter and any other accessories to the flexible tubing using gear clamps provided, if using the fabric type hose. If metal hose is used, rivet or screw all accessories rigidly. It is also recommended to rivet through the clamp, flexible tubing and adapter to ensure a rigid connection is established when using fabric hose.

### HOSE REEL TUBING ASSEMBLY



**FIG2**

8. Insert the thrust nozzle into the interior receptacle and lock it into place by twisting the pin into the “J” slot.
9. Ensure that the outside door is automatically opened when the thrust nozzle is inserted. If not contact the factory immediately.

### OPERATION

Complete operation of the DPA-Door Port Assembly is simple and can be accomplished in six steps.

1. Insert the thrust nozzle into the door port to open the door and lock the pin into place.
2. Attach the tailpipe adapter to the exhaust pipe of the vehicle.
3. Turn on the vehicle.

When the exhaust procedure is completed and the vehicle is shut off.

4. Remove the adapter from the vehicle’s tailpipe.
5. Remove the thrust nozzle from the door port. (Make sure the door on the door port closes correctly.)
6. Remove the flexible tubing assembly from the work area. Flexible tubing should be stored in a safe place to avoid accidental damage.

### MAINTINENCE

1. Routinely check the flexible tubing for wear to ensure proper airflow. If small holes appear in the tubing tape over them.
2. Periodically check all the connections between the tubing, thrust nozzle, and adapter for leakage. Tighten if necessary.
3. Keep the door port completely free of obstructions at all times. Exhaust back-up or fire may result from obstructions.
4. Routinely check the door for proper opening and closing. Lubricate the hinge if necessary.
5. For problems not covered in these instructions contact your representative.



11900 Riverwood Drive  
Burnsville, MN 55337  
Phone: (952) 894-6637  
Fax: (952) 894-0750  
Email: [info@ventaire.com](mailto:info@ventaire.com)

## 12-MONTH WARRANTY

---

**VENTAIRE** warrants their products, to the original purchaser, to be free from defects in material and workmanship under normal use and service (except for those cases which buyer supplied materials are used) for a period of 12 months from the original date of shipment. During the warranty period, **VENTAIRE**, will at its option, repair, replace, or issue credit for any components that are deemed defective by **VENTAIRE**.

Buyer's failure to pay the full amount due within (60) days of invoice shall release seller from any and all liability or obligation to any warranty.

Before returning equipment for repair or replacement, a **Return Authorization Number** must be obtained from **VENTAIRE** (952-894-6637.) The **Return Authorization Number** must be written on the outside of all shipping cartons. Items returned without a **Return Authorization Number** will be refused. Items returned should be in original condition in which it was received and must be accompanied with a written explanation of the reason(s) for their return.

This warranty does **not** cover damage caused by accident, misuse, misapplication, or unauthorized service modification.