



**11900 Riverwood Drive
Burnsville, MN 55337**

Phone: 952-894-6637

Fax: 952-894-0750

Email: info@ventaire.com

Website: www.ventaire.com

PRODUCT GUIDE FOR

Ventaire

Extension Booms

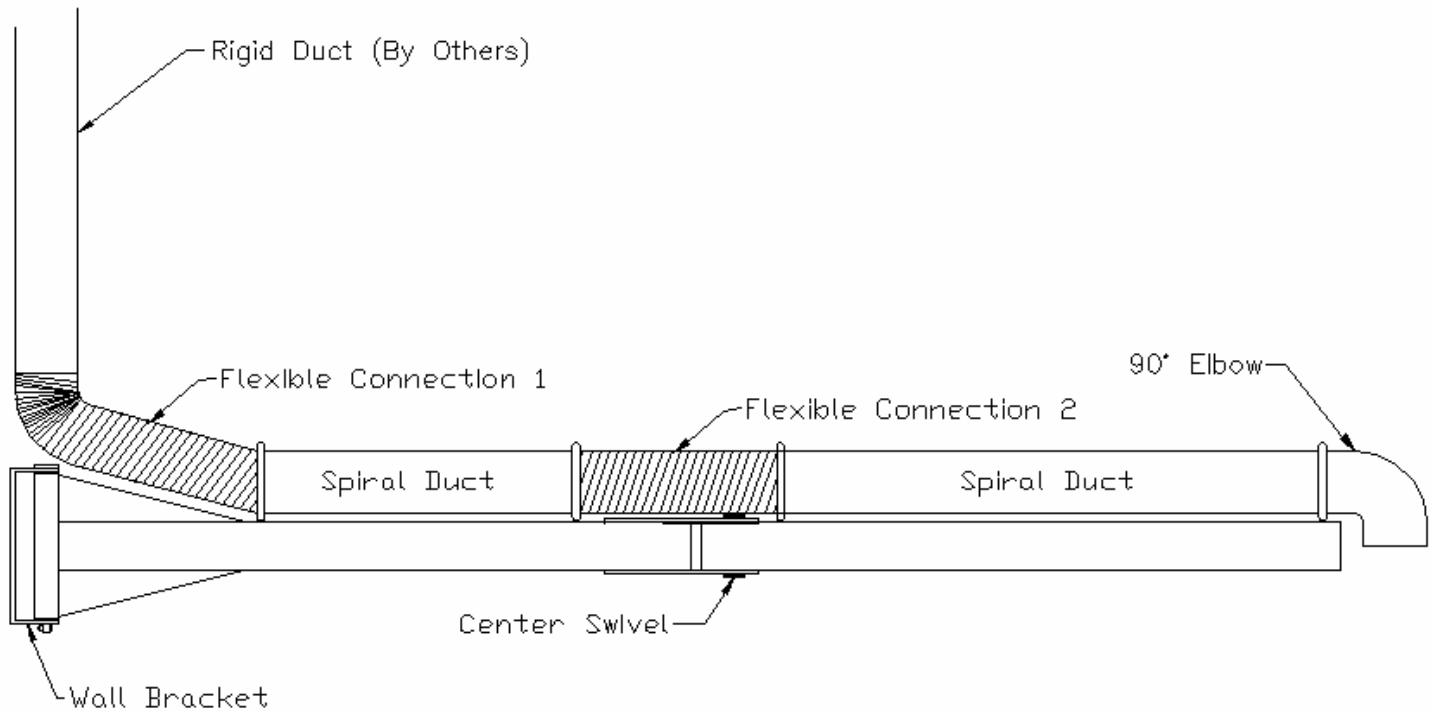


FIG 1

INTRODUCTION

1. Prior to installation inspect all the components received for shipping damage. If damage occurred contact your Ventaire representative for assistance.
2. Read **ALL** the instructions before proceeding with any installation, operation, or maintenance.

INSTALLATION

1. The extension boom should be mounted in a location so that the rigid duct can be installed as shown in FIG 1. Determine the height of the wall bracket so that the boom will not interfere with any other systems or come in contact with any equipment that can damage the system or effect performance. Rigid pipe should be at least a foot from the top of the wall bracket.
2. Level and secure the wall bracket to the desired rigid support (mounting methods differ with the desired mounting surface. 1/2" bolts are recommended if mounting to wall or beam.) The wall bracket can also be welded for added support once leveled. NOTE: To insure proper functioning of the boom, the wall bracket must be mounted completely level.
3. Lift and position beam 1 so that the longer pivot bolt (threaded on both ends) can slide through the wall bracket holes and the sleeve on beam 1. NOTE: Make sure the predrilled holes for the duct clamps are pointed up. Fasten using the washers and nuts provided (See FIG 1). Test movement of the beam to make sure torque is correct. The boom should not be able to move up or down when pressure is applied vertically and should also pivot freely horizontally.

4. Lift the second beam up to the center swivel on the first beam and position it so that the smaller swivel bolt can be fastened using the provided washers and nuts. NOTE: Make sure the predrilled holes for the duct clamps are pointed up. Again, test the movement of the beam to make sure the torque is correct.
5. Attach spiral ductwork to the steel boom (as shown in FIG 1) using the provided duct clamps and bolts. It is recommended to first bolt the duct to the beams using the duct clamps, then to rivet the ductwork to the clamps through the predrilled holes located on the top of the duct clamps to insure a rigid connection.
6. Attach flexible tubing to the rigid duct and spiral duct using the provided hose clamps. For additional security, drill through the center of the base clamp and the spiral duct. Rivet the flexible tubing to the rigid duct and spiral duct through the hose clamps. NOTE: Use the larger section of the flexible tubing to connect the vertical rigid ductwork to the boom (trimming may be necessary) and the shorter length at the center swivel of the boom. (As pictured in FIG 1) Test for free movement.

Systems with ACR cable reel

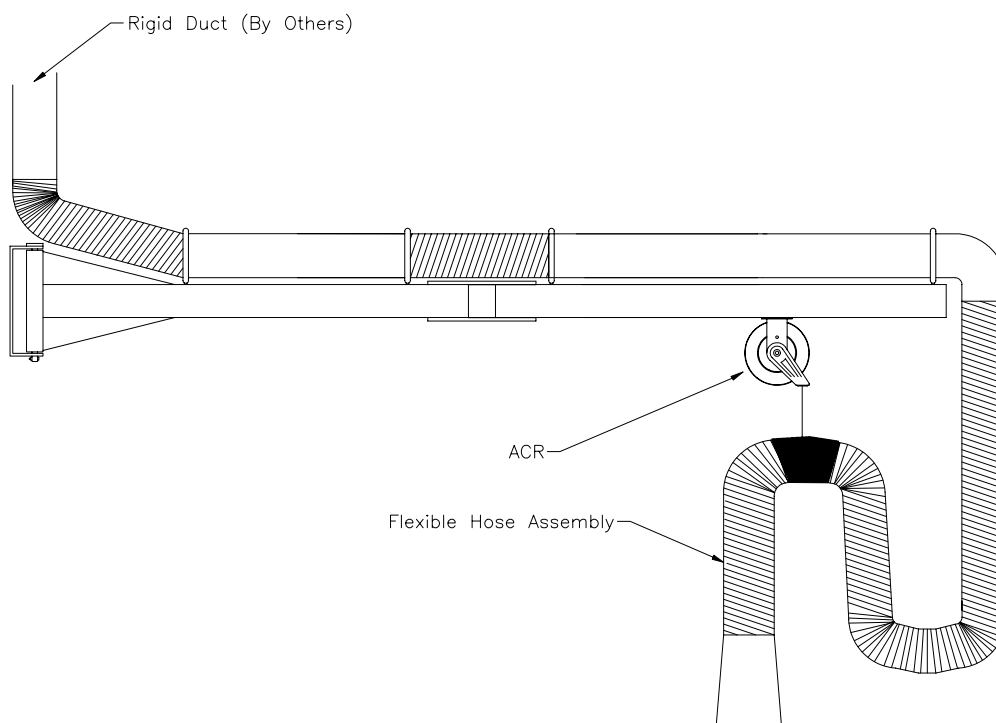
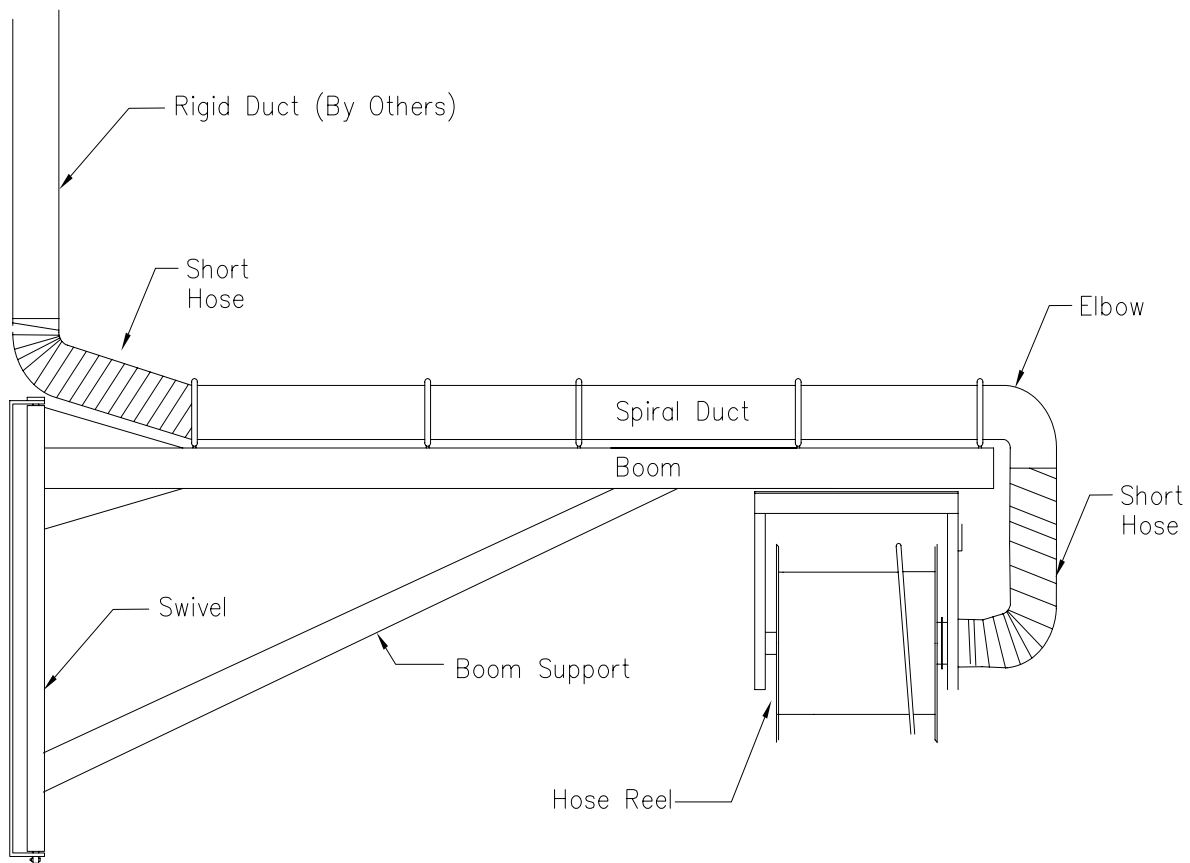


FIG 2

7. If not a cable reel system, go to step 14. Attach the ACR cable reel to the ACR mounting plate located near the end of the extension boom using the four 1/4" bolts, flat washers, lock washers, and lock nuts provided. For maximum reach, position the reel so that the cable guide arm is pointed towards the 90 degree elbow.

Systems with Hose Reels



Extension Boom

FIG 3

14. If not a hose reel system, installation is complete. Attach the hose to the hose reel mounting brackets located near the end of the extension boom using the four 1/2" bolts, flat washers, lock washers, and lock nuts provided. Attach the short hose provided from the elbow on the extension arm to the hose reel using the attachment procedure in 6 above. If the reel is motorized, make sure to leave enough slack when installing the electrical to allow the swivel to operate properly. Go to the hose reel product guide for further installation of the reel and its accessories.

OPERATION

1. Position the extension boom to allow the attachments (Fume arm, tubing drop, etc.) on the end of the boom to get as close to the fume source as possible without interfering with the work.
2. Position the source capture adapter at an appropriate location. NOTE: Position welding hood as close to the source as possible without obstructing vision of the work area. Place the tailpipe adapter on the exhaust stack or tailpipe of the vehicle being serviced.

3. Open or close any applicable air shut-off devices (i.e. blast gate, quadrant damper, etc.)
4. Turn on the exhaust fan and begin work. (i.e. welding or start vehicle engine, etc.)
5. After completing the vehicle service or welding, turn off the exhaust fan.
6. Open or close any applicable air shut-off devices (i.e. blast gate, quadrant damper, etc.)
7. After retracting any boom attachments, position the extension boom and attachments safely out of the work area.

MAINTENANCE

1. Inspect pivot points and base mount connections for any unusual wear. Replace or tighten as necessary.
2. Routinely check the flexible tubing, connections, and accessories for excessive wear to ensure proper airflow. Replace if necessary.
3. Check the flexible tubing supports and other optional mounted items. Adjust, tighten, or secure as necessary.
3. Inspect the airflow path through the extension boom flex and other attachments routinely to ensure the airflow path is free from any obstructions.
4. All mating parts of the ACR are to be lubricated with Perma Bond or Loctite anti-seize. The following parts of the ACR should be inspected routinely. The cable itself should be visually inspected for any wear or fraying which may result in personal injury and/ or equipment damage. All bolts should also be inspected to ensure that the reel and all components are securely tightened. Do not attempt to perform any service other than the above. All other services should be performed by Ventaire. Failure to do so can result in personal injury and/or equipment damage and may void warranty.
5. For problems not covered in these situations contact your representative.



11900 Riverwood Drive
Burnsville, MN 55337
Phone: (952) 894-6637
Fax: (952) 894-0750
Email: info@ventaire.com

12-MONTH WARRANTY

VENTAIRE warrants their products, to the original purchaser, to be free from defects in material and workmanship under normal use and service (except for those cases which buyer supplied materials are used) for a period of 12 months from the original date of shipment. During the warranty period, **VENTAIRE**, will at its option, repair, replace, or issue credit for any components that are deemed defective by **VENTAIRE**.

Buyer's failure to pay the full amount due within (60) days of invoice shall release seller from any and all liability or obligation to any warranty.

Before returning equipment for repair or replacement, a **Return Authorization Number** must be obtained from **VENTAIRE** (952-894-6637.) The **Return Authorization Number** must be written on the outside of all shipping cartons. Items returned without a **Return Authorization Number** will be refused. Items returned should be in original condition in which it was received and must be accompanied with a written explanation of the reason(s) for their return.

This warranty does **not** cover damage caused by accident, misuse, misapplication, or unauthorized service modification.