



**11900 Riverwood Drive
Burnsville, MN 55337**

Phone: 952-894-6637

Fax: 952-894-0750

Email: info@ventaire.com

Website: www.ventaire.com

PRODUCT GUIDE FOR

Ventaire Overhead
Disappearing System

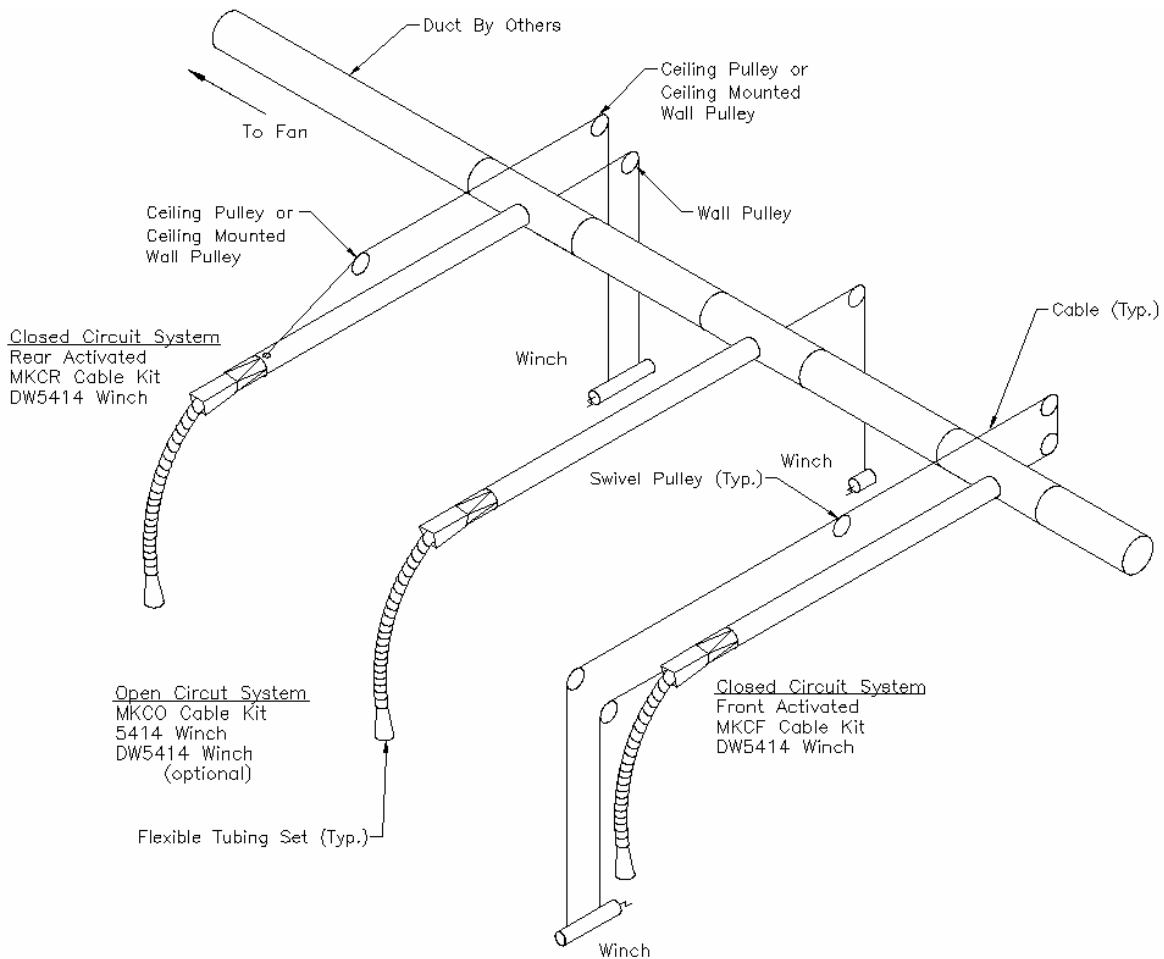


FIG 1: OVERHEAD DISAPPEARING LAYOUT OPTIONS

INTRODUCTION

1. Prior to installation, inspect all the components received for shipping damage. If damage occurred contact your Ventaire representative for assistance.
2. Read **ALL** the instructions before proceeding with any installation, operation, or maintenance.

INSTALLATION

1. Determine the type of system required from FIG 1. The figure illustrates the placement of pulleys, winches and cables.
2. Install all rigid duct and duct fittings first using industry standard methods. At the opening of the duct attach a flange that mates with the disappearing fixture flange.

NOTE: The holes on the duct flange must line up with the holes of the fixture flange so that the roller inside the fixture is on the bottom & parallel with the floor.

3. Attach the disappearing fixture to the flange with hardware (not provided).
4. Fasten the winch or wall cleat to the wall or column directly inline with center of duct approximately 4' up from the floor.
5. All the pulleys must be positioned properly to prevent binding of cables. The proper pulley locations are shown in FIG 2. Wall pulleys are to be fastened to the wall or beam using screws or bolts (not provided). For ceiling pulleys place one end of S-hook through the eye on the pulley and crimp it shut to ensure the pulley is securely installed. Attach the other end of the S-hook to an eyebolt or similar device (not provided) on ceiling in the same manner.

NOTE: The pulley(s) that direct the cable(s) to the winch should be installed straight above the winch or wall cleat to ensure cable winds evenly on winch. The other(s) pulley(s) (if applicable) should be installed on, or near the ceiling directly inline with rigid duct.

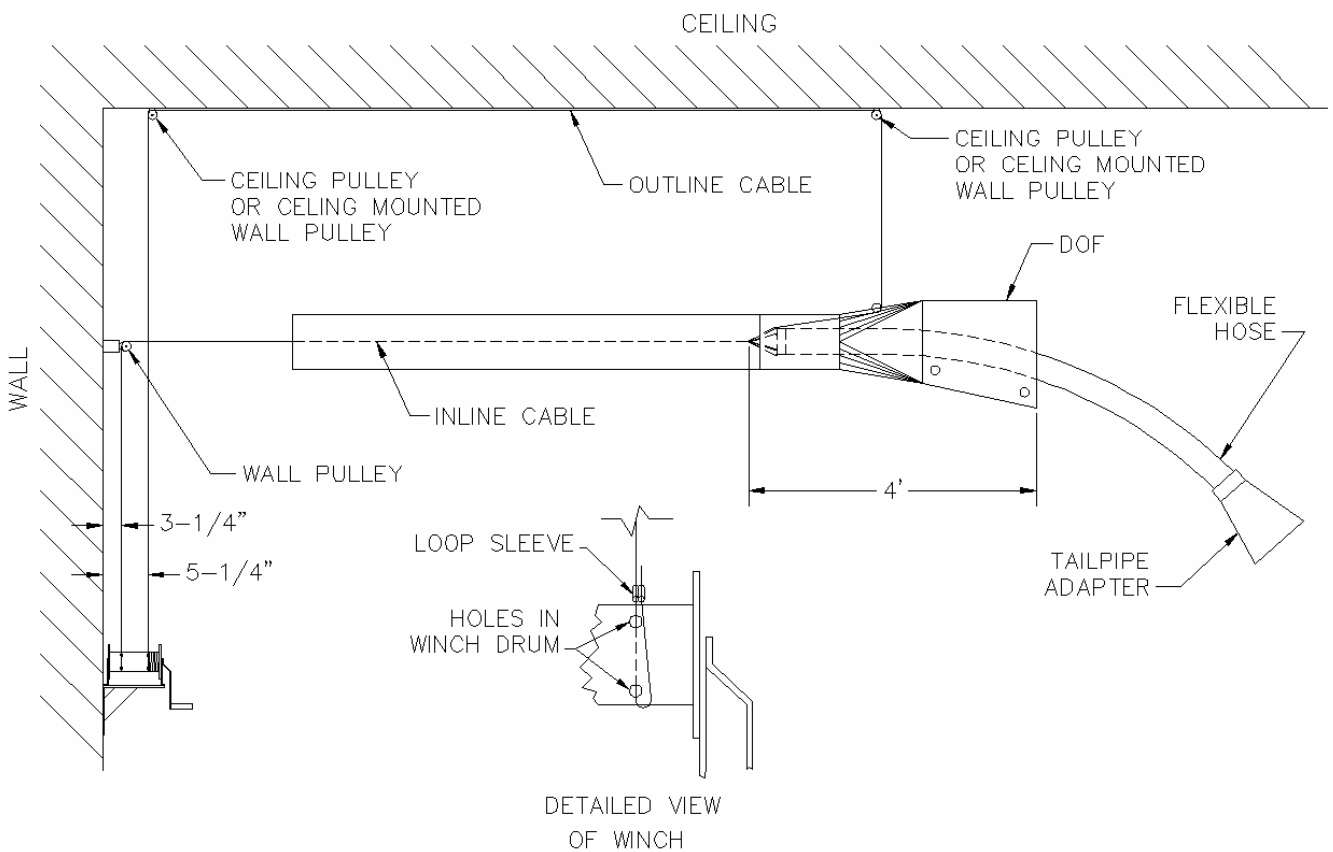


FIG2: REAR ACTUATED PULLEY LAYOUT

OVERHEAD DISAPPEARING TUBING ASSEMBLY

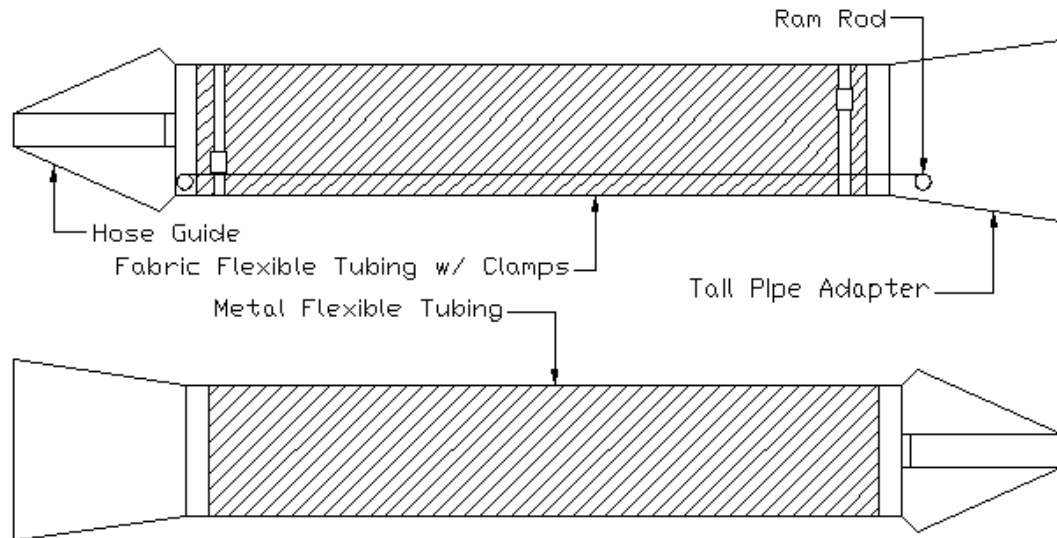


FIG 3: OVERHEAD DISAPPEARING TUBING ASSEMBLY LAYOUT

6. Connect the flexible tubing to tailpipe adapter & hose guide as shown in FIG 3. Tubing may be assembled prior to delivery.

For Flexible Fabric Tubing

7. Fasten the hose guide to the flexible tubing using the provided hose clamp. To ensure that a rigid connection is established, drill and rivet the connections through the hose clamps.
8. Fasten the Tailpipe adapter to the other end of the flexible tubing using the provided hose clamp. To ensure a rigid connection is established, drill and rivet the connections through the hose clamps.

For Flexible Metal Tubing

9. Fasten the hose guide and tailpipe adapter with pan head screws, rivets or welding. Hose clamps will not work.

Systems containing wall cleats or single acting winches proceed to step 10. For dual acting winches, skip to step 11.

Single Acting Winch/Wall Cleat

10. Attach cable(s) to the flexible tubing as shown in FIG 4 with the clamps provided (2 clamps per cable). Route the cable(s) to the corresponding pulleys shown in FIG 1 and attach to the wall cleat or winch.

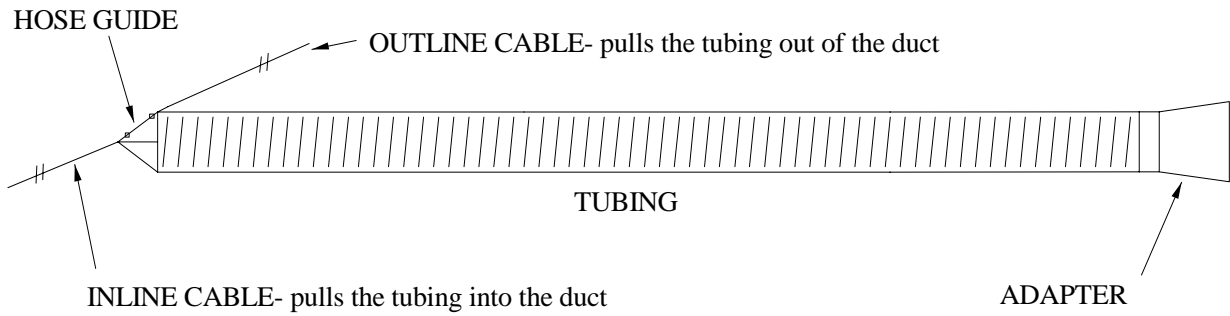


FIG 4: CABLE TO TUBING ASSEMBLY LAYOUT

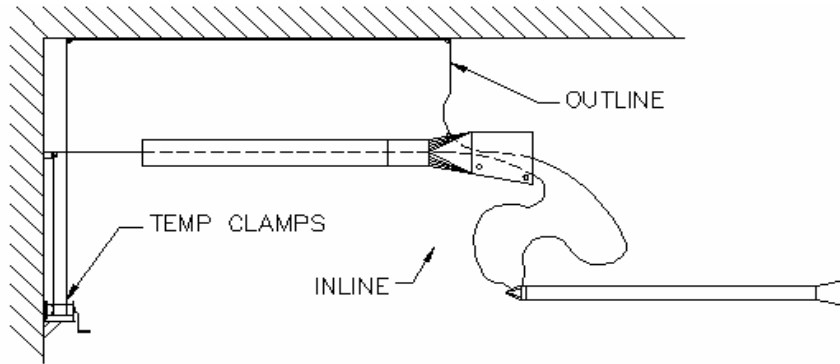


FIG 5A: ATTACH BOTH LINES TO HOSE GUIDE ON FLEX ASSEMBLY

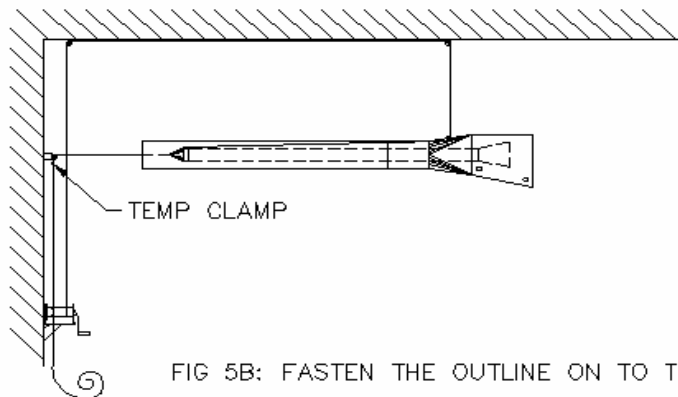


FIG 5B: FASTEN THE OUTLINE ON TO THE WINCH

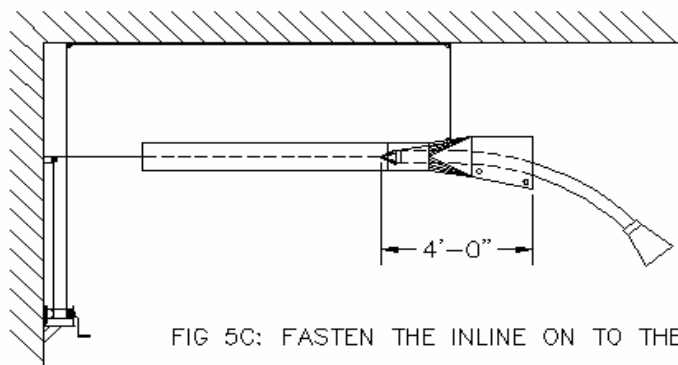


FIG 5C: FASTEN THE INLINE ON TO THE WINCH

FIG 5: CABLE ROUTING DETAILS

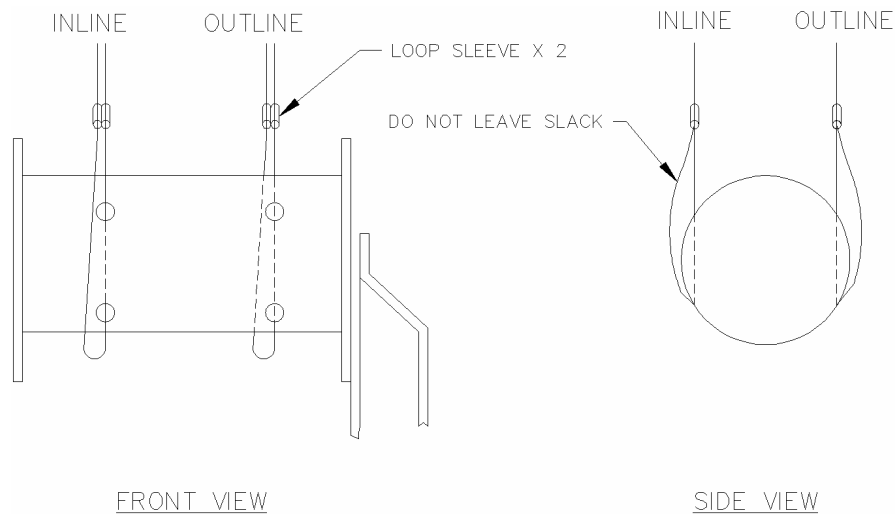


FIG 6: CABLE ATTACHEMNT TO DUAL ACTING WINCH

Dual Acting Winch

11. The dual acting winch (DW5414) must have two cables attached so that one cable is winding while the other is simultaneously unwinding.
 - 1) Route the cable(s) through the duct and to the corresponding pulleys shown in FIG 2, leaving the excess hanging out of the disappearing overhead fixture (DOF). Do not permanently attach the cables to winch at this point. Temporarily clamp the cables around the winch to keep the cables from sliding from the pulleys. The system should now look like FIG5A.
 - 2) Attach cables to the flexible tubing hose guide as shown in FIG 4 with cable clamps provided.
 - 3) While grasping the inline cable, remove the temporary clamp on this cable.
 - 4) Using the inline cable, pull and guide the tubing assembly into the rigid duct until the adapter is totally recessed inside the overhead disappearing fixture and the open end of the adapter is on the top of the front roller of the DOF.
 - 5) The hose should now be in a position so that it does not require the cables to hold its position. Attach a temporary clamp on the inline cable at the pulley closest to the winch. This will prevent the hose assembly from moving during the next steps. The system should now look like FIG 5B.
 - 6) Route the outline cable through the holes provided in the DW5414 drum (the holes farthest from the wall or column).
 - 7) Making sure there is no slack in the outline cable, crimp the aluminum sleeve clamp provided to the loose end of the cable and touching the DW5414 drum to keep the cable from retreating back through the DW5414 drum.
 - 8) Ensuring that the tubing assembly does not slide too far out of the rigid duct, rotate the DW5414 to pull the tubing out of the rigid duct until the hose guide is about 4' from the out end of the DOF.

NOTE: The tubing guide must remain inside the duct to prevent binding and permit proper airflow.

- 9) Secure the tubing assembly in this position (temporarily clamp the inline cable at the pulley closest to the winch. Route the outline cable end through the holes in the DW5414 drum (closest to the wall).
- 10) Making sure there is no slack in either cable, crimp the aluminum sleeve clamp provided to the loose end of the cable and touching the DW5414 drum to keep the cable from retreating back through the DW5414 drum. The system should now look like FIG 5C.

NOTE: Any slack in the cables may cause the system to operate improperly.

12. Ensure that the system is installed properly by extending the flexible tubing out and then retracting it.
13. If system does not work properly call your Ventaire, Inc. representative.

OPERATION

1. Lower the tailpipe adapter or diesel stack adapter to the desired location. If a winch is used, the gear must be disengaged. **Keep a firm hold of the winch handle while lowering.** If only a cable or rope is used, it is recommended that the operator wear gloves. Make sure a very firm grip is kept on the rope or cable while lowering the adapter.
2. Re-engage the winch gear, or securely tie off the rope or cable to the wall cleat.
3. Attach the tailpipe or stack adapter securely to the vehicle exhaust pipe.
4. Open any shut-off devices (blast gate, quadrant damper, etc.) and turn on the exhaust fan.
5. When finished, turn off the exhaust fan.
6. Disconnect the adapter from the exhaust pipe and raise it up and out of the way with a winch, rope, or cable. The tail pipe adaptor will be hot after use.

MAINTENANCE

1. Maintenance for the exhaust fan should be performed according to the manufacturer's instructions.
2. Routinely check the flexible tubing for wear to ensure proper airflow. If small holes appear in the tubing tape can be used to temporarily block them.
3. Periodically check all the connections between the tubing and adapter for leakage. Tighten if necessary.
4. Periodically check the rope, chain, or cable and pulleys for excessive wear or misalignment.
5. If applicable, routinely clean and lubricate winch gears according to the instructions on the red tag included with winches.

6. Keep the airflow free from any obstructions.
7. The rigid duct should require no maintenance.



11900 Riverwood Drive
Burnsville, MN 55337
Phone: (952) 894-6637
Fax: (952) 894-0750
Email: info@ventaire.com

12-MONTH WARRANTY

VENTAIRE warrants their products, to the original purchaser, to be free from defects in material and workmanship under normal use and service (except for those cases which buyer supplied materials are used) for a period of 12 months from the original date of shipment. During the warranty period, **VENTAIRE**, will at its option, repair, replace, or issue credit for any components that are deemed defective by **VENTAIRE**.

Buyer's failure to pay the full amount due within (60) days of invoice shall release seller from any and all liability or obligation to any warranty.

Before returning equipment for repair or replacement, a **Return Authorization Number** must be obtained from **VENTAIRE** (952-894-6637.) The **Return Authorization Number** must be written on the outside of all shipping cartons. Items returned without a **Return Authorization Number** will be refused. Items returned should be in original condition in which it was received and must be accompanied with a written explanation of the reason(s) for their return.

This warranty does **not** cover damage caused by accident, misuse, misapplication, or unauthorized service modification.