



**11900 Riverwood Drive  
Burnsville, MN 55337**

**Phone: 952-894-6637**

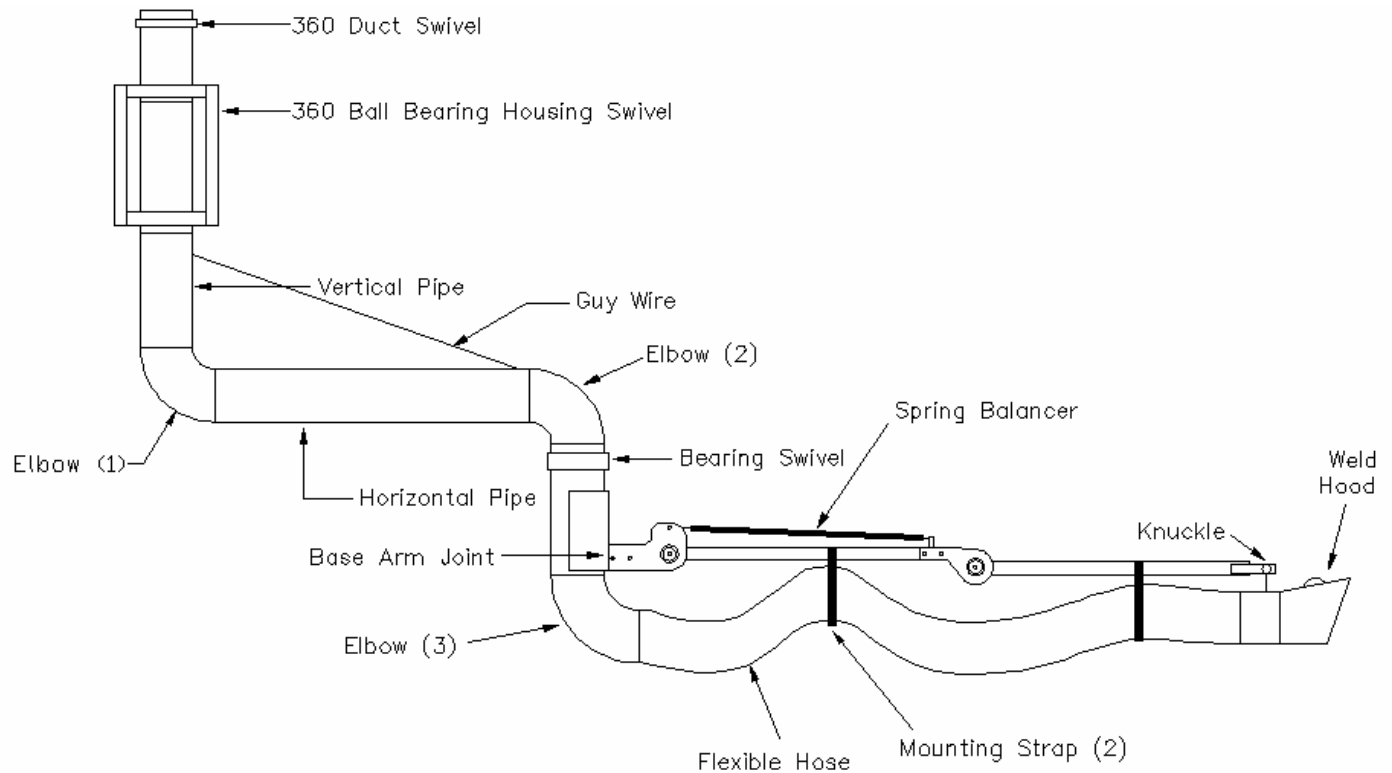
**Fax: 952-894-0750**

**Email: [info@ventaire.com](mailto:info@ventaire.com)**

**Website: [www.ventaire.com](http://www.ventaire.com)**

**PRODUCT GUIDE FOR**

**Ventaire**  
**EAFE Fume Arm**



**FIG 1**

## **INTRODUCTION**

1. Prior to all installation inspect all of the components received for shipping damage. If damage has occurred contact your Ventaire representative for assistance.
2. Read ALL the instructions before proceeding with any installation, operation, or maintenance.

## **INSTALLATION**

1. Secure the 360 ball bearing housing swivel to a wall or ceiling by standard industry methods.
2. Mount pipe elbow 1 to the swivel assembly using the hardware supplied.
3. Mount the horizontal pipe to pipe to elbow 1 using the mounting hardware supplied. Use a forklift or other device to level the boom while mounting.
4. Attach the guy wire between the vertical pipe and the horizontal pipe at the eyebolts (factory set). Adjust the turnbuckle so the horizontal pipe is supported parallel to the floor. Be sure that the cable clamps are secure, the guy wire is taut, and the boom is level before removing the support device.

5. Mount elbow 2 to the bearing swivel to the horizontal pipe using the hardware supplied.
6. Mount the flexible arm to the bearing swivel in FIG 1 using the hardware supplied. It may be necessary to adjust the guy wire slightly if the boom is not level. The flexible arm is preset at the factory but may need to be fine tuned once assembled. This is done by tightening or loosening the joint bolts.
7. Secure the welding hood ball into the flexible arm knuckle and tighten securely. Fine tune this joint after completing the assembly by tightening or loosening the knuckle bolt. Also, attach the flexible hose to the swivel elbow, flexible arm, and welding hood using the clamps and mounting straps provided. The straps should not be tightly secured around the flexible hose. Leave a 1” gap between the flexible hose and the arm to ensure maximum mobility.
8. Attach the rigid duct to the duct swivel using standard industries procedures.

## **OPERATION**

Complete operation of the EAFE can be accomplished in six easy steps:

1. Position the weld hood on the end of the arm as close to the fume source as possible without obstructing vision of the work area.
2. Open or close any applicable air shut-off devices. (i.e. blast gate, quadrant damper, etc.)
3. Turn on the exhaust fan.

When finished simply:

4. Turn off the exhaust fan.
5. Close shutoffs.
6. Move the EAFE unit out of the work area.

## **MAINTENANCE**

Maintenance is also very routine and uncomplicated. Follow the steps below to ensure that the unit is both effective and efficient.

1. Routinely check the flexible tubing and tubing connections between the base and the weld hood for excessive wear to ensure proper airflow.
2. Inspect the springs and connections to counterbalances in the arm for deformation. Replace if necessary.

3. Be certain the spring safety cables exist for every spring and that they are connected. Add or connect safety cables as necessary.
4. Arm joints must turn smoothly and without obstruction. Adjust the friction in each joint by tightening or loosening the nut on the joint if necessary. Generally, the friction should be greatest in the base arm joint and will decrease in each successive joint.
5. Keep the airflow free from any obstructions.



11900 Riverwood Drive  
Burnsville, MN 55337  
Phone: (952) 894-6637  
Fax: (952) 894-0750  
Email: [info@ventaire.com](mailto:info@ventaire.com)

## 12-MONTH WARRANTY

---

**VENTAIRE** warrants their products, to the original purchaser, to be free from defects in material and workmanship under normal use and service (except for those cases which buyer supplied materials are used) for a period of 12 months from the original date of shipment. During the warranty period, **VENTAIRE**, will at its option, repair, replace, or issue credit for any components that are deemed defective by **VENTAIRE**.

Buyer's failure to pay the full amount due within (60) days of invoice shall release seller from any and all liability or obligation to any warranty.

Before returning equipment for repair or replacement, a **Return Authorization Number** must be obtained from **VENTAIRE** (952-894-6637.) The **Return Authorization Number** must be written on the outside of all shipping cartons. Items returned without a **Return Authorization Number** will be refused. Items returned should be in original condition in which it was received and must be accompanied with a written explanation of the reason(s) for their return.

This warranty does **not** cover damage caused by accident, misuse, misapplication, or unauthorized service modification.

---

©*Ventaire 2005*