



**11900 Riverwood Drive
Burnsville, MN 55337**

Phone: 952-894-6637

Fax: 952-894-0750

Email: info@ventaire.com

Website: www.ventaire.com

PRODUCT GUIDE FOR

IAFE Fume Arm

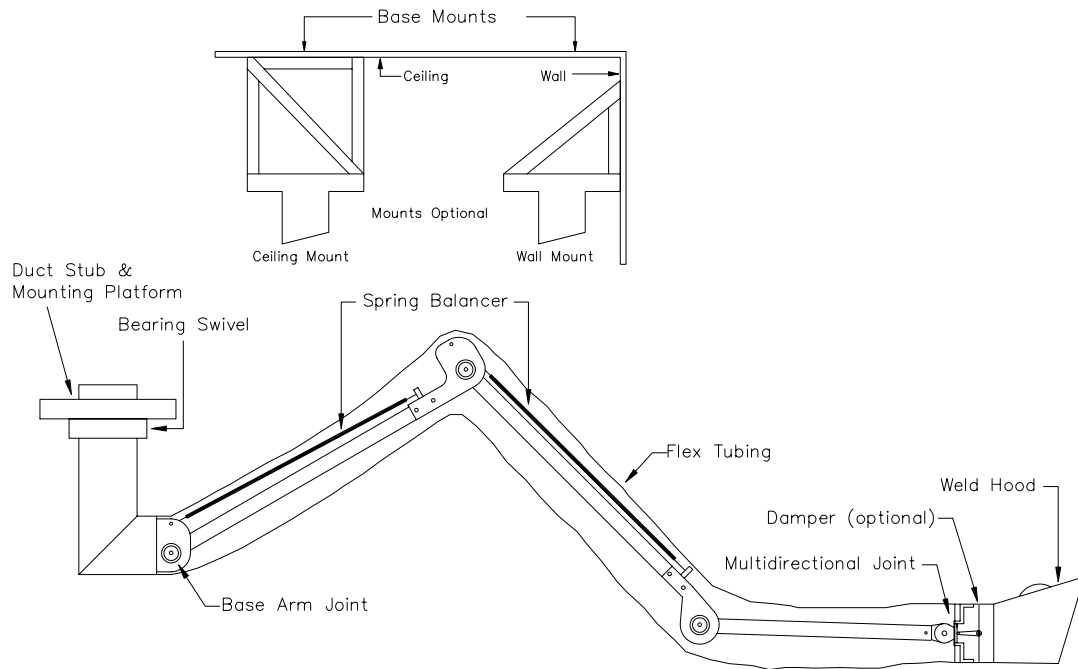


FIG 1: Typical of a 3 section arm assembly. The entire middle arm section and middle arm joint are deleted for arms with only two sections.

INTRODUCTION

1. Prior to installation inspect all components received for shipping damage. If damage occurred contact your Ventaire representative for assistance.
2. Read **ALL** the instructions before proceeding with any installation, operation, or maintenance.

INSTALLATION

1. Mount the base mount to the wall or ceiling with minimum 2" x 2" x 1/8" angle iron if the Ventaire mounts are not supplied. Mounting configurations should look similar to those in FIG 1.
2. Attach the pipe elbow section to the base using the six bolts and the hardware provided if not preassembled.

WARNING: Counterbalance springs can cause serious damage to personnel or equipment. Install with caution.

3. Assemble the arm sections as shown in FIG 1. Connect the spring counterbalance(s), if necessary, by placing one hook, on the end of the spring, through the hole in the top of arm joint, and placing the other hook onto the eyebolt fastened to the square tubing at the end of the arm section.
4. Adjust the tension in the arm joints if necessary by tightening or loosening the adjustment bolt/nut. The finished arm should move freely as well as hold its position.
5. Slide the flexible tubing over the arm and attach it to the elbow with the hose clamp provided.
6. Attach the weld hood to the multidirectional joint with the hardware provided.
7. Attach the flexible tubing to the weld hood with the hose clamp provided.
8. The finished arm should appear as depicted in FIG 1.

OPERATION

Complete operation of the IAFE can be accomplished in six easy steps:

1. Position the weld hood on the end of the arm as close to the fume source as possible without obstructing vision of the work area.
2. Open or close any applicable air shut-off devices (blast gates, quadrant dampers, etc.).
3. Turn on the exhaust fan.

When finished simply:

4. Turn off the exhaust fan.
5. Close the shutoffs.
6. Move the weld hood on the arm, and arm itself, out of the work area.

MAINTENANCE

Maintenance is also very routine and uncomplicated. Follow the steps detailed below to ensure a fume arm is both effective and efficient.

1. Routinely check the flexible tubing and tubing connections between the base and the weld hood for excessive wear to ensure proper airflow. Replace if necessary.
2. Routinely remove flexible tubing from the arm mechanism and clear the arm of dirt and obstructions with soapy water. Allow the arm sufficient time to dry before using again.
3. Arm joints must turn smoothly and without obstruction. Adjust the friction in each joint by tightening or loosening the nut on the joint as necessary. Generally, the friction should be the greatest in the base arm joint and will decrease in each successive joint.
4. Check the springs and connections to counterbalances in the arm for deformation. Replace if necessary.



11900 Riverwood Drive
Burnsville, MN 55337
Phone: (952) 894-6637
Fax: (952) 894-0750
Email: info@ventaire.com

12-MONTH WARRANTY

VENTAIRE warrants their products, to the original purchaser, to be free from defects in material and workmanship under normal use and service (except for those cases which buyer supplied materials are used) for a period of 12 months from the original date of shipment. During the warranty period, **VENTAIRE**, will at its option, repair, replace, or issue credit for any components that are deemed defective by **VENTAIRE**.

Buyer's failure to pay the full amount due within (60) days of invoice shall release seller from any and all liability or obligation to any warranty.

Before returning equipment for repair or replacement, a **Return Authorization Number** must be obtained from **VENTAIRE** (952-894-6637.) The **Return Authorization Number** must be written on the outside of all shipping cartons. Items returned without a **Return Authorization Number** will be refused. Items returned should be in original condition in which it was received and must be accompanied with a written explanation of the reason(s) for their return.

This warranty does **not** cover damage caused by accident, misuse, misapplication, or unauthorized service modification.

©*Ventaire* 2005