

PROJECT:

LOCATION:

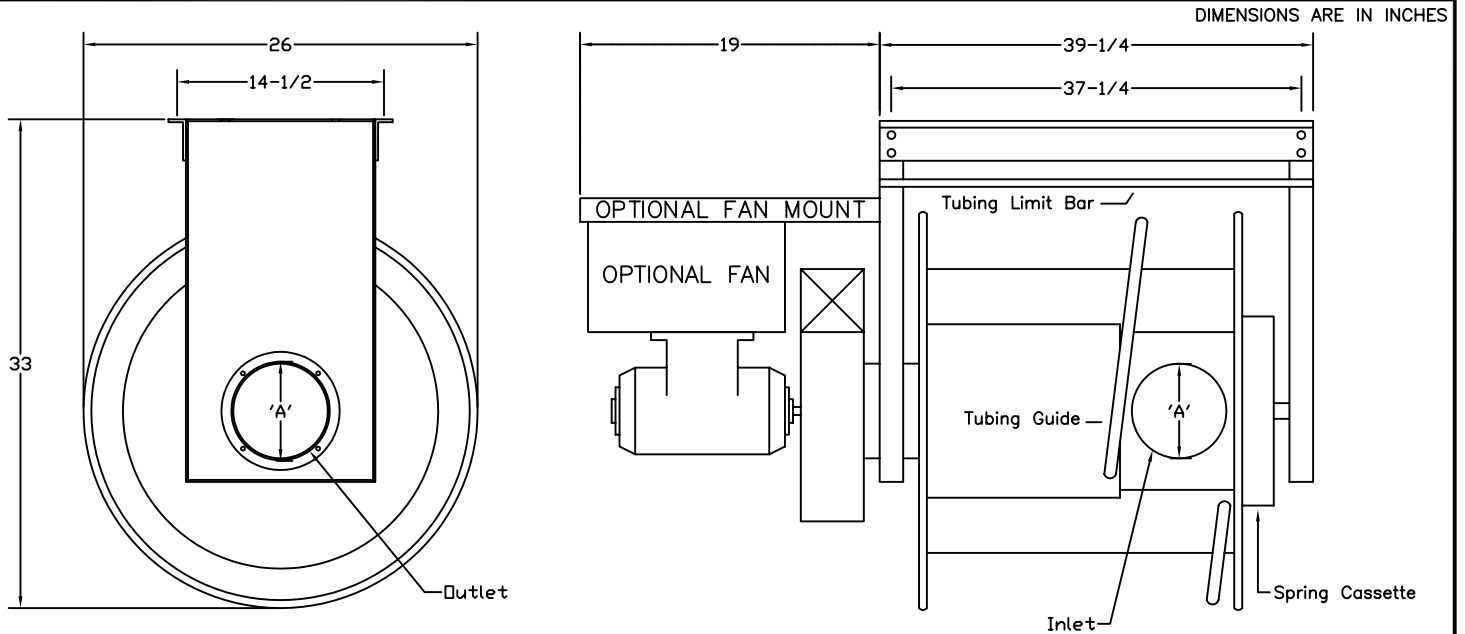
ENGINEER:

SALES ENGINEER:

ARCHITECT:

CONTRACTOR:

DATE:



MODEL	TUBING DIAMETER-'A'	FLEX CAPACITY STD * (FT)
HRA300	3"	25
HRA400	4"	25
HRA500	5"	25
HRA600	6"	25

SPECIFICATONS:

DRUM: 14 GA. GALVANIZED STEEL  
 DRUM SIDE PLATE: 16 GA. GALVANIZED STEEL  
 FRAME: 12 GA. GALVANIZED STEEL  
 BEARING: SLEEVE BEARINGS  
 LOCKING LATCH MECHANISM  
 ADJUSTABLE HOSE STOP INCLUDED (NOT SHOWN)

OPTIONS:

MICROSWITCH FOR FAN/DAMPER CONTROL (MODEL MKS)  
 FAN (MODEL PW SHOWN) W/ MOUNT (MODEL FRM)

Four 1/2" Mounting Holes in 14.5" x 37.25" Rectangular Pattern.

SCHEDULE

ITEM	QTY	MODEL	TUBING TYPE	TUBING DIAMETER	TUBING LENGTH	REFERENCE

NOTES

Tailpipe adapter, flexible tubing, and fan specified on seperate drawing.

\* Consult factory for larger capacities or nonstandard diameters.