

SUBMITTAL

TSL-INLINE FAN

VENTAIRE

www.ventaire.com

Arrangement # 9 Class 1, Other Arrangements Available.

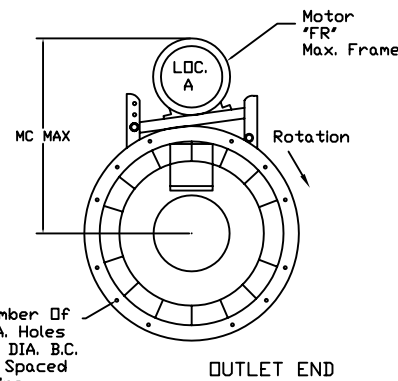
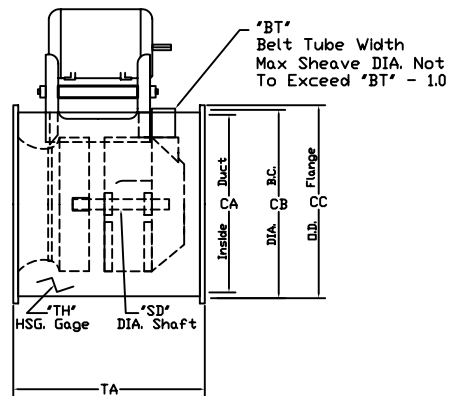
Project

Contractor

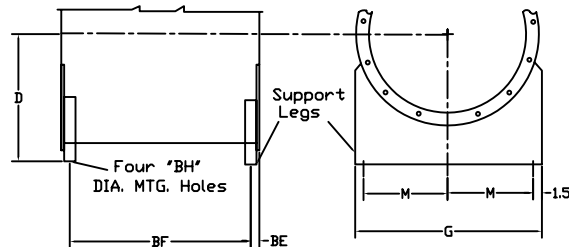
Sales Engineer

Date

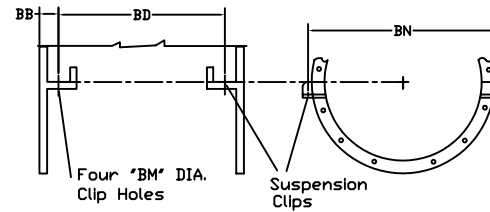
Air
Flow



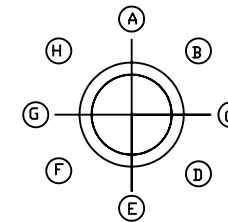
Type "TSL" Horizontal Discharge



HMB Horizontal Base Mounted



HCH Horizontal Ceiling Hung



Motor Location

Viewed From
Outlet End

SIZE	BB	BD	BE	BF	BH	BM	BN	BT	CA	CB	CC	D	DH	FR	G	M	MC	NH	SD	TA	TH
122	1.00	23.25	1.06	23.13	0.44	0.56	19.75	5.25	16.56	18.50	19.75	12.0	0.56	184T	19.75	8.38	23.13	8.00	1.00	25.25	10.00
150	1.00	27.75	1.06	27.63	0.44	0.56	23.50	6.50	20.25	22.13	23.38	14.0	0.56	215T	23.38	10.19	25.73	8.00	1.00	29.75	10.00
182	1.50	28.25	1.06	29.19	0.44	0.56	27.75	6.50	24.69	26.75	28.00	16.0	0.69	256T	28.00	12.50	34.45	12.00	1.187	31.25	12.00
200	1.50	31.50	1.06	32.44	0.56	0.56	30.13	7.25	27.06	29.13	30.31	18.0	0.81	256T	30.31	13.66	36.20	12.00	1.437	34.50	12.00
222	1.50	35.50	1.31	35.94	0.56	0.56	33.13	8.00	30.06	32.13	33.38	20.0	0.81	286T	33.38	15.19	39.15	12.0	1.437	38.50	12.00
245	1.50	40.75	1.31	41.19	0.56	0.81	36.25	8.93	33.13	35.13	36.38	21.0	0.81	365T	36.38	16.69	43.61	12.0	1.437	43.75	12.00
270	1.50	44.25	1.31	44.69	0.56	0.81	39.63	9.75	36.50	38.50	39.75	23.0	0.81	365T	39.75	18.38	46.41	12.0	1.687	47.25	12.00
300	1.50	49.50	1.31	49.88	0.56	0.81	43.75	10.93	40.56	44.88	44.88	25.0	0.81	365T	44.88	20.94	49.38	16.0	1.937	52.50	10.00
330	1.50	54.75	1.31	55.13	0.56	0.81	47.88	12.00	44.63	47.25	49.00	27.00	0.81	365T	49.00	23.00	50.81	16.00	1.937	57.75	10.00
365	2.00	60.25	1.56	61.13	0.56	0.81	52.56	13.25	49.38	52.00	53.75	29.00	0.81	365T	53.75	25.38	53.75	16.00	1.937	64.25	10.00
402	2.00	66.75	1.63	67.50	0.81	0.81	57.56	14.75	54.38	57.50	59.75	33.00	0.81	405T	59.75	28.38	61.77	16.00	2.187	70.75	10.00
445	2.00	74.63	1.63	75.38	0.81	0.81	63.38	16.25	60.19	63.25	65.60	36.00	0.81	445T	65.50	31.25	66.72	16.00	2.437	78.63	10.00
490	2.00	82.38	1.63	83.13	0.81	0.81	69.44	18.00	66.25	69.38	71.63	39.00	0.81	445T	71.63	34.31	70.18	24.00	2.687	86.38	10.00
542	2.00	91.63	2.31	91.00	0.81	1.06	76.56	19.88	73.38	77.00	79.75	43.00	0.81	445T	79.75	38.38	74.01	24.00	2.937	95.63	10.00
600	2.50	100.63	2.31	101.00	0.81	1.06	85.38	22.13	81.19	84.75	87.50	47.00	0.81	445T	87.50	42.25	78.41	24.00	2.937	105.63	10.00
660	2.50	111.38	2.31	111.75	1.06	1.06	93.56	24.25	89.31	92.88	95.63	52.00	0.81	445T	95.63	46.31	82.77	24.00	3.437	116.38	10.00
730	2.50	123.50	2.31	123.88	1.06	1.06	102.94	26.88	98.75	104.38	107.13	57.00	0.81	445T	107.13	52.06	87.76	24.00	3.437	128.50	10.00
807	2.56	137.00	2.38	137.38	1.06	1.06	115.50	29.50	109.25	114.63	117.63	62.00	0.81	445T	117.63	57.31	93.25	24.00	3.937	142.13	7.00
890	2.56	151.13	2.38	151.50	1.06	1.06	126.56	32.63	120.31	126.06	128.75	68.50	0.81	445T	128.75	62.88	99.06	24.00	3.937	156.25	7.00