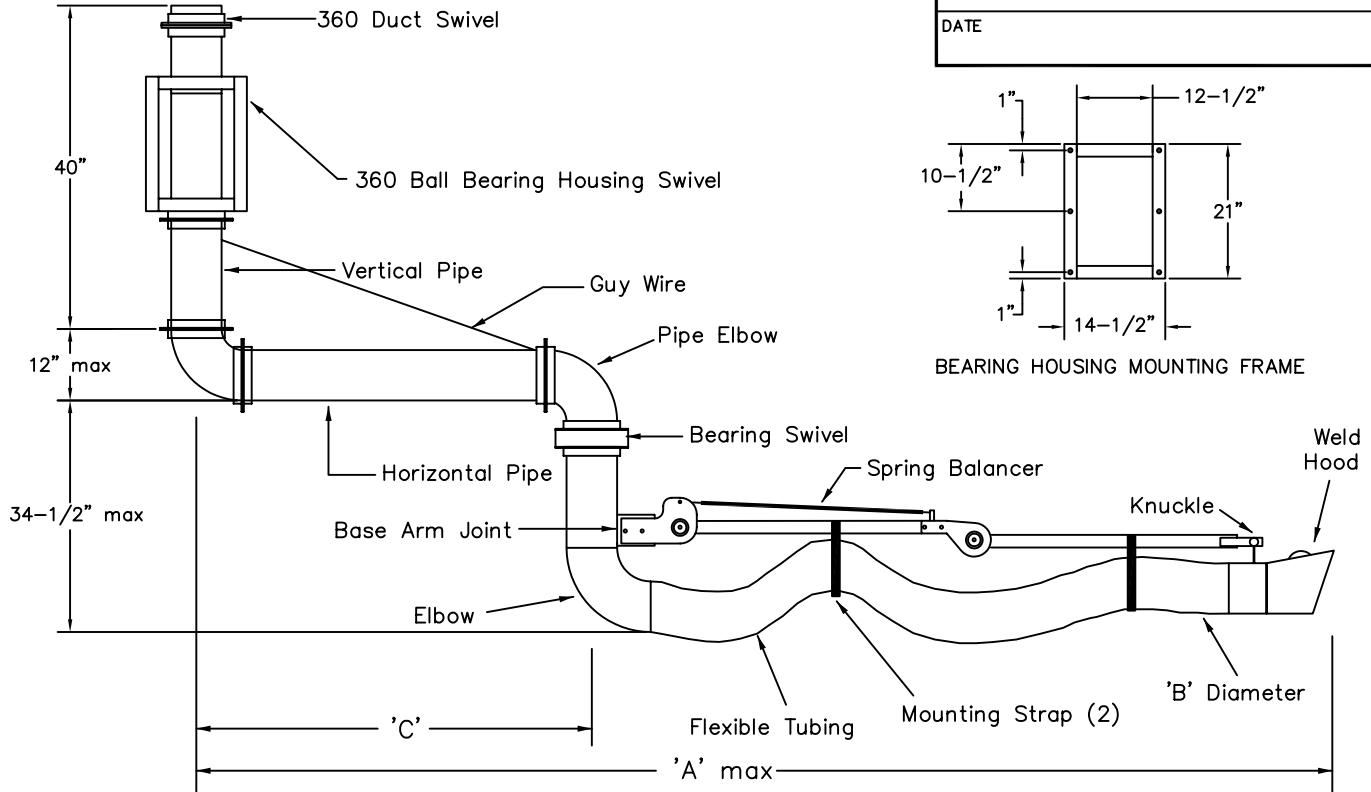


MODEL	'A'	'B'	'C'	MODEL	'A'	'B'	'C'
EAFE 4150	15'	4"	5'	EAFE 4200	20'	4"	10'
EAFE 5150	15'	5"	5'	EAFE 5200	20'	5"	10'
EAFE 6150	15'	6"	5'	EAFE 6200	20'	6"	10'
EAFE 8150	15'	8"	5'	EAFE 8200	20'	8"	10'
EAFE 10150	15'	10"	5'	EAFE 10200	20'	10"	10'

Special lengths and diameters may be available upon request.

PROJECT
LOCATION
ARCHITECT
ENGINEER
CONTRACTOR
SALES ENGINEER
DATE



SCHEDULE

ITEM	QTY	MODEL	REFERENCE

NOTES Weld hood – galvanized, damper optional (Also in stainless, aluminum, polycarbonate, and fiberglass optional)
 Arm – aluminum
 Arm joint – steel w/ friction brake allowing adjustable stop points.
 Flexible tubing – type NG neoprene impregnated fiberglass w/ external wear strip.
 Type SG, PG, and MG flexible tubing are optional.
 Vertical pipe and pipe elbows – 16 ga. steel.
 Horizontal pipe – 18 ga. steel.
 Housing support – 2" x 2" x 1/4" steel angle
 Swivel housing – 14 ga. steel
 Turn elbow – 24 ga. steel
 See FAFE submittal for ceiling and wall mounts.