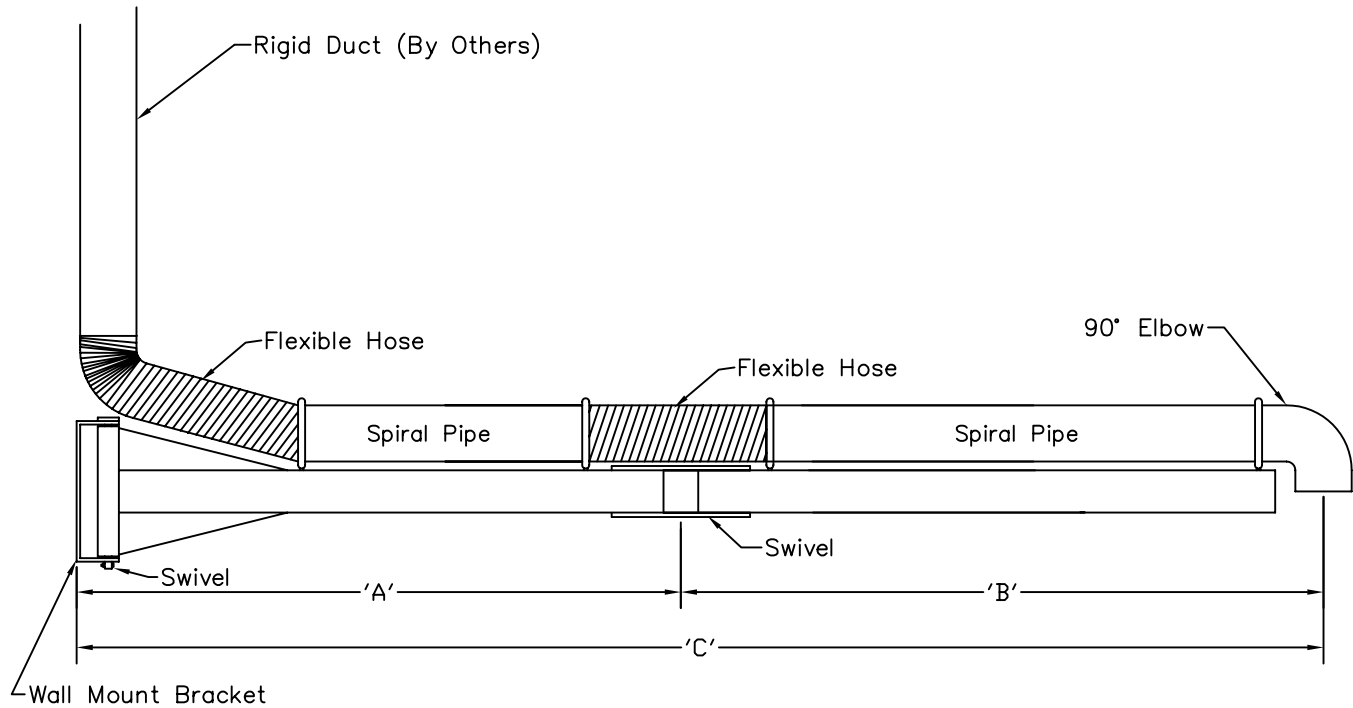


MODEL	'A'	'B'	'C'
EXB 6150	10'	5'	15'
EXB 8150	10'	5'	15'
EXB 10150	10'	5'	15'
EXB 6200	10'	10'	20'
EXB 8200	10'	10'	20'
EXB 10200	10'	10'	20'

***Special lengths and diameters may be available upon request.

PROJECT
LOCATION
ARCHITECT
ENGINEER
CONTRACTOR
SALES ENGINEER
DATE



All dimensions are in inches

SCHEDULE

ITEM	QTY	MODEL	REFERENCE

NOTES

- Wall Mount Bracket – 1/2” Steel with enamel finish
- Horizontal Beams – 5” x 2” x 3/16” and 4” x 2” x 3/16” rectangular steel tubing with enamel finish.
- Swivel Pins – 1”dia steel
- Spiral Pipe – 20 Gauge Galvanized Steel
- Flexible Tubing Supports – Galvanized Steel
- Flexible Tubing – SG (for vehicle Exhaust applications) or NG (for welding fume applications)
- Options: Stainless steel duct, various flexible tubings can be substituted