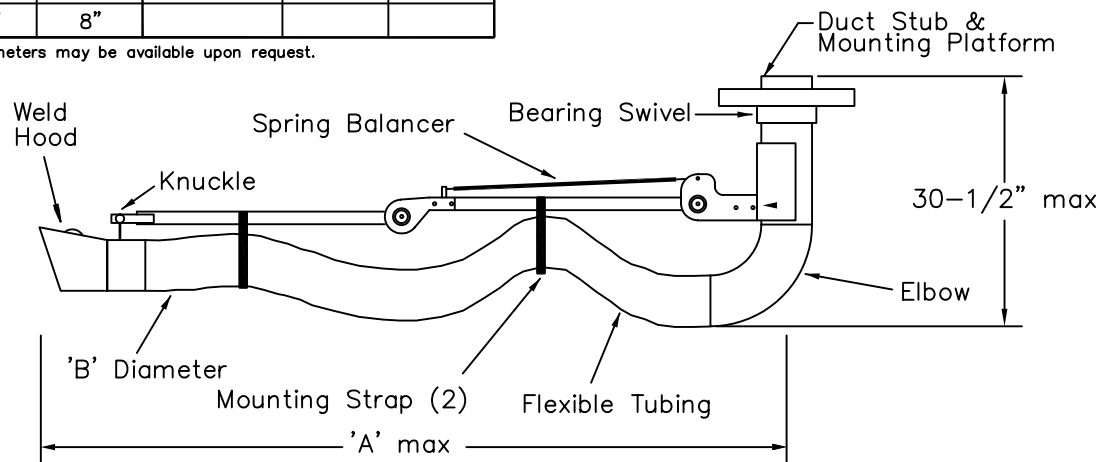
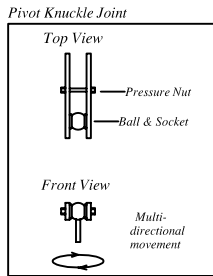


MODEL	'A'	'B'	MODEL	'A'	'B'
FAFE 4050	5'	4"	FAFE 4100	10'	4"
FAFE 5050	5'	5"	FAFE 5100	10'	5"
FAFE 6050	5'	6"	FAFE 6100	10'	6"
FAFE 8050	5'	8"	FAFE 8100	10'	8"
FAFE 4075	7.5'	4"			
FAFE 5075	7.5'	5"			
FAFE 6075	7.5'	6"			
FAFE 8075	7.5'	8"			

Special lengths and diameters may be available upon request.



PROJECT \_\_\_\_\_

LOCATION \_\_\_\_\_

ARCHITECT \_\_\_\_\_

ENGINEER \_\_\_\_\_

CONTRACTOR \_\_\_\_\_

SALES ENGINEER \_\_\_\_\_

DATE \_\_\_\_\_

**SCHEDULE**

ITEM	QTY	MODEL	REFERENCE

**NOTES**

- Platform and swivel duct - 16 ga. painted steel.
- Arm - Aluminum.
- Arm joint - Steel.
- Ceiling and wall mount - 1-1/2" x 1-1/2" x 3/16" painted angle.
- Flexible tubing - type NG neoprene impregnated fiberglass with helical support - standard.
- Type SG, PG, and MG flexible tubing optional.
- Weld hood - galvanized, damper optional (Also in stainless, aluminum, polycarbonate, and fiberglass optional)