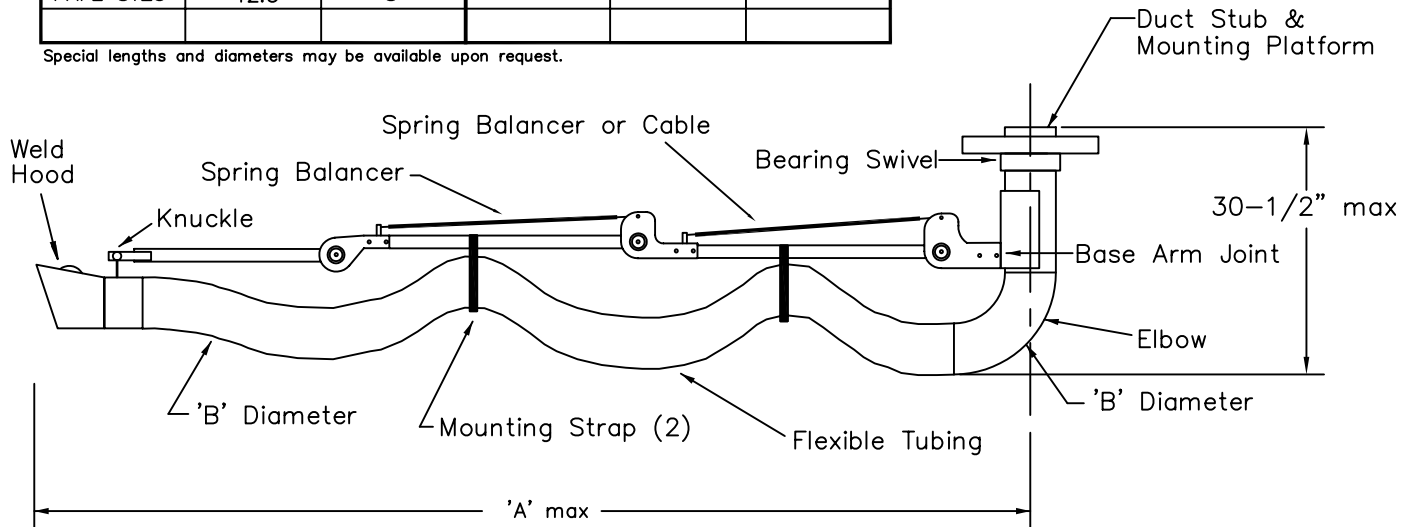


PROJECT
LOCATION
ARCHITECT
ENGINEER
CONTRACTOR
SALES ENGINEER
DATE

MODEL	'A'	'B'	MODEL	'A'	'B'
FAFE 4125	12.5'	4"	FAFE 4150	15'	4"
FAFE 5125	12.5'	5"	FAFE 5150	15'	5"
FAFE 6125	12.5'	6"	FAFE 6150	15'	6"
FAFE 8125	12.5'	8"			

Special lengths and diameters may be available upon request.



**SCHEDULE**

ITEM	QTY	MODEL	REFERENCE

**NOTES**

- Platform and swivel duct - 16 ga. steel.
- Arm - Aluminum.
- Arm joint - Steel w/ friction brake allowing adjustable stop points
- Ceiling and wall mount - 1-1/2" x 1-1/2" x 3/16" angle.
- Flexible tubing - type NG neoprene impregnated fiberglass with helical support - standard.
- Type SG, PG, and MG flexible tubing optional.
- Weld hood - galvanized, damper optional (Also in stainless, aluminum, polycarbonate and fiberglass optional)