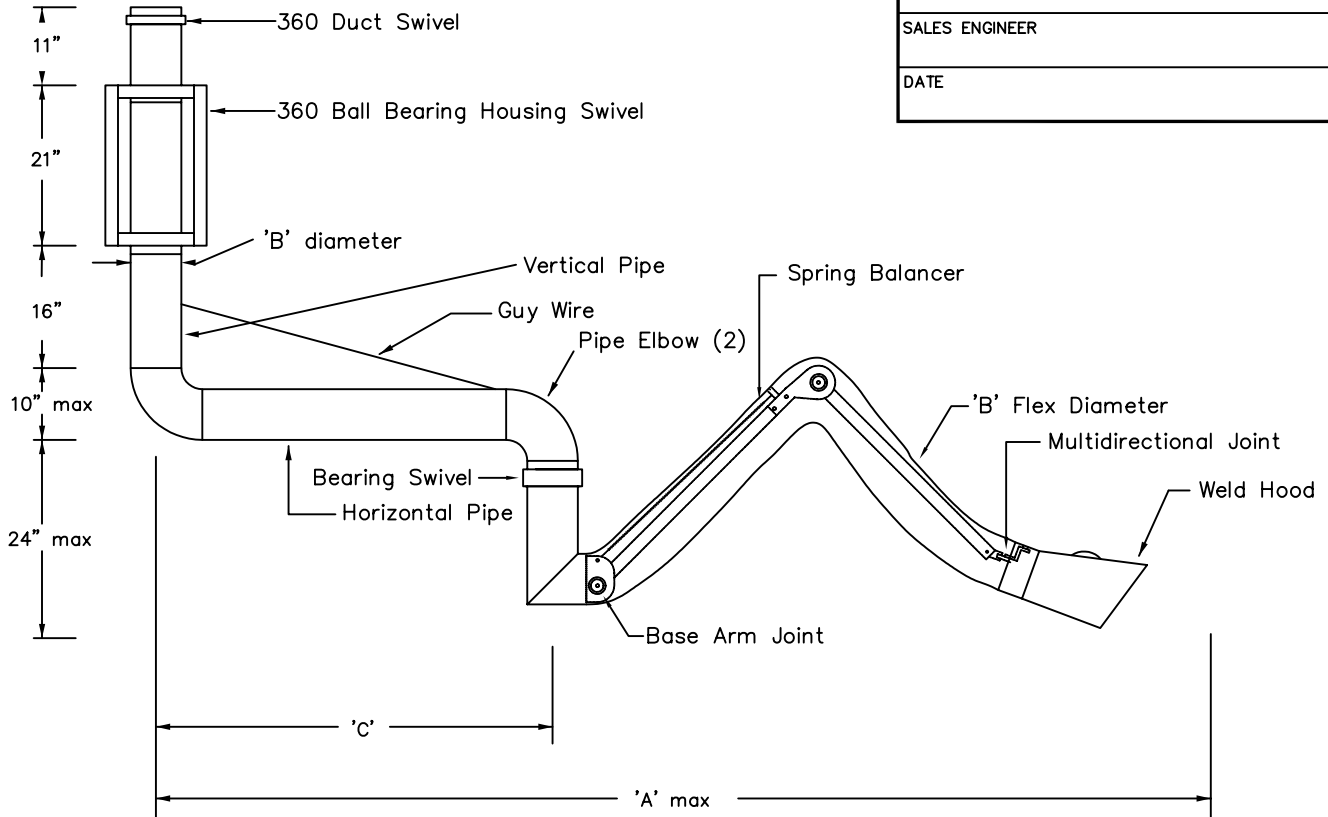


MODEL	'A'	'B'	'C'	MODEL	'A'	'B'	'C'
IEAFE 6150	15'	6"	5'	IEAFE 6200	20'	6"	10'
IEAFE 8150	15'	8"	5'	IEAFE 8200	20'	8"	10'
IEAFE 10150	15'	10"	5'	IEAFE 10200	20'	10"	10'

Special lengths and diameters available upon request.

PROJECT
LOCATION
ARCHITECT
ENGINEER
CONTRACTOR
SALES ENGINEER
DATE



Light package and damper optional.

### SCHEDULE

ITEM	QTY	MODEL	REFERENCE

**NOTES**

- Weld Hood – galvanized, damper optional, (stainless, aluminum, polycarbonate, and fiberglass optional)
- Arm – aluminum
- Arm joint – steel w/ friction disk and spring washer.
- Flexible tubing – type NG neoprene impregnated fiberglass w/ external wear strip.
- Type SG, PG, and MG flexible tubing are optional.
- Vertical pipe and pipe elbows – 16 ga. steel.
- Horizontal pipe – 18 ga. steel.
- Housing support – 2" x 2" x 1/4" steel angle
- Swivel housing – 14 ga. steel
- Turn elbow – 24 ga. steel
- See FAFE submittal for ceiling and wall mounts.