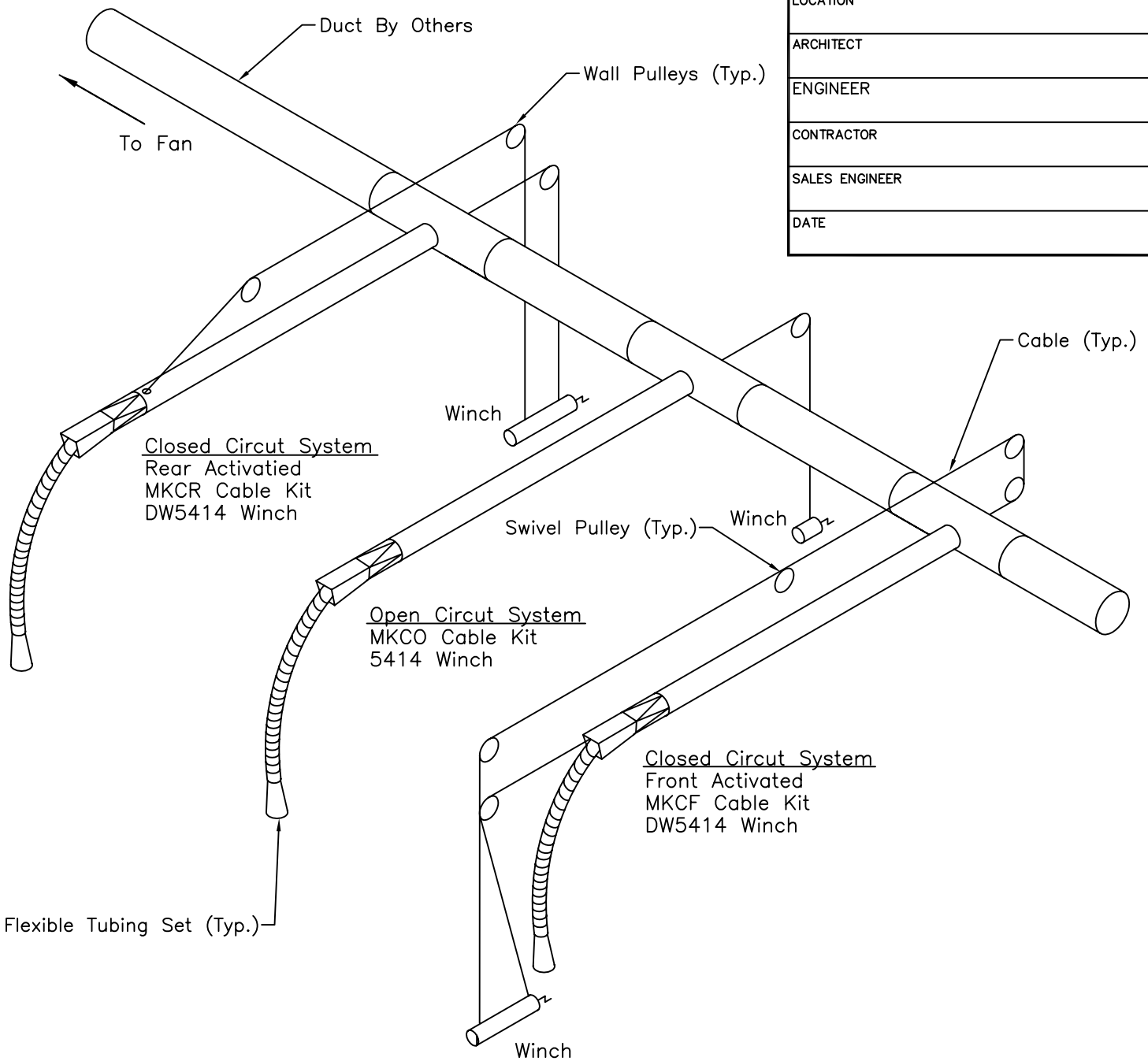


PROJECT
LOCATION
ARCHITECT
ENGINEER
CONTRACTOR
SALES ENGINEER
DATE



NOTES:

- 1) Metal flexible tubing only.
- 2) See installation instructions for proper installation.
- 3) Rigid duct must be at least 1" larger than flexible tubing unless you have the roller tray option.
- 4) Rigid duct must be at least 3" larger than flexible tubing with roller tray option
- 5) Flexible tubing set consists of flexible tubing, tailpipe adapter, and hose guide.
- 6) For individual complete submittals, please consult factory.