

PROJECT:

LOCATION:

ENGINEER:

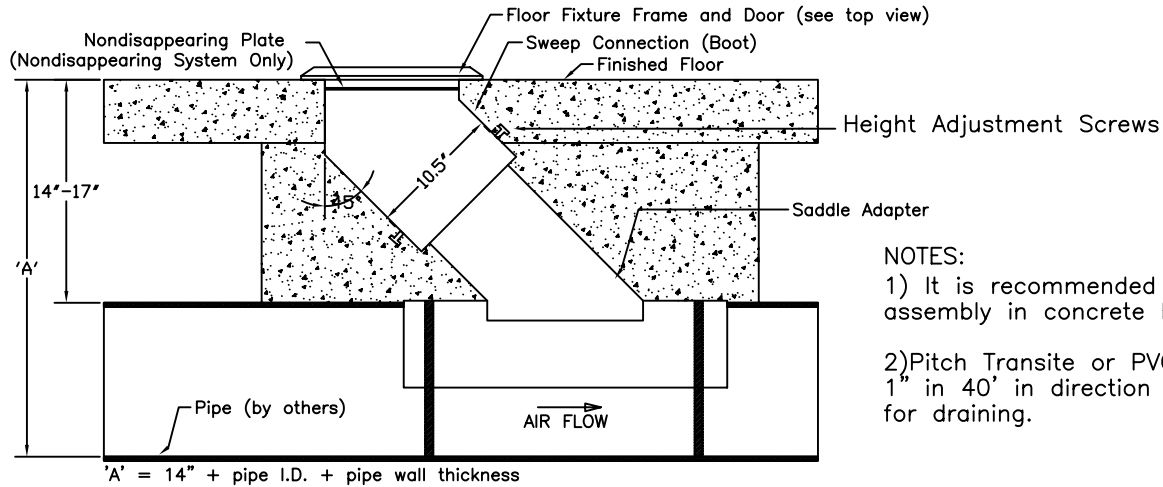
SALES ENGINEER:

ARCHITECT:

CONTRACTOR:

DATE:

ALL DIMENSIONS IN INCHES

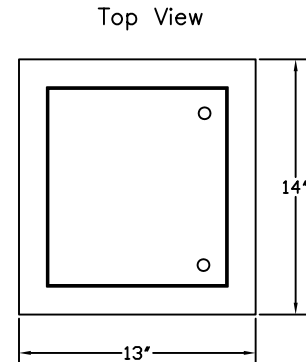


- NOTES:
- 1) It is recommended to encase the assembly in concrete below grade.
 - 2) Pitch Transite or PVC coated pipe 1" in 40' in direction of air flow for draining.

Please specify underfloor pipe diameter when ordering.

MODEL	FLEX DIA.	MIN PIPE I.D.
STD6A/STN6A	3"	10"
STD6A/STN6A	4"	10"
STD6A/STN6A	5"	10"
STD6A/STN6A	6"	10"

- SXXXX - Single
- XTXXX - Transite and PVC coated pipe
- XXDX/XXNX - Disappearing or Nondisappearing
- XXXXA - Aluminum Floor Plate and Door



STD, STN
Single Fixture

TOP VIEW

SCHEDULE

ITEM	QTY	MODEL	PIPE DIA (ID)	FLEXIBLE TUBING DIAMETER	FLEXIBLE TUBING LENGTH	REFERENCE

NOTES

- Floor Plate 3/8" 319 Cast AL. Door - 1/4" 319 Cast AL.
- Boot & Saddle Connection - 20 ga. galvanized steel.
- Options: 12 ga., 16 ga., or stainless steel boot & saddle.
- Nondisappearing floor fixture has plate with hole for tubing