

PROJECT:

LOCATION:

ENGINEER:

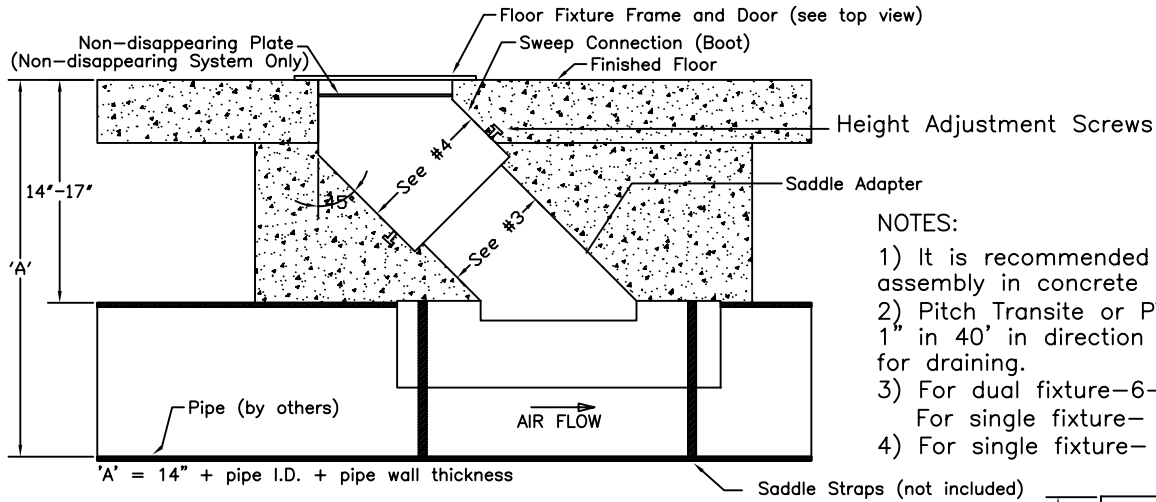
SALES ENGINEER:

ARCHITECT:

CONTRACTOR:

DATE:

ALL DIMENSIONS IN INCHES

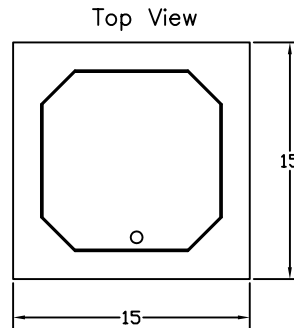


NOTES:

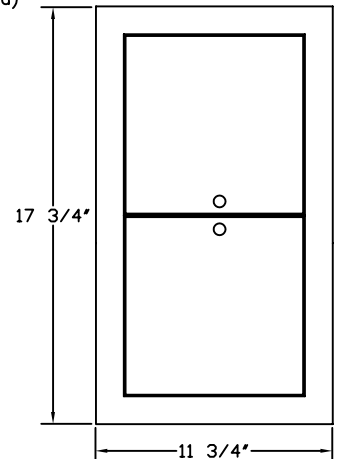
- 1) It is recommended to encase the assembly in concrete below grade.
- 2) Pitch Transite or PVC coated pipe 1" in 40' in direction of air flow for draining.
- 3) For dual fixture-6-1/2" * 13-1/2"
For single fixture- 8"dia
- 4) For single fixture- 10.5"

Please specify underfloor pipe diameter when ordering.

MODEL	FLEX DIA.	MIN PIPE I.D.
STD6/STN6	3"	10"
STD6/STN6	4"	10"
STD6/STN6	5"	10"
STD6/STN6	6"	10"
DTD6/DTN6	5"	14"



STD, STN
Single Fixture



DTD, DTN
Dual Fixture

TOP VIEW

- SXX6 / DXX6 - Single or Dual Floor Fixture
- XTX6 - Transite and PVC coated pipe
- XXD6 / XXN6 - Disappearing or Non disappearing

SCHEDULE

ITEM	QTY	MODEL	PIPE DIA (ID)	FLEXIBLE TUBING DIAMETER	FLEXIBLE TUBING LENGTH	REFERENCE

NOTES

Floor Plate & Door - 1/4" steel; Boot & Saddle Connection - 20 ga. galvanized steel.
Options: 12 ga., 16 ga., or stainless steel boot & saddle.
Non-disappearing floor fixture has plate with hole for tubing