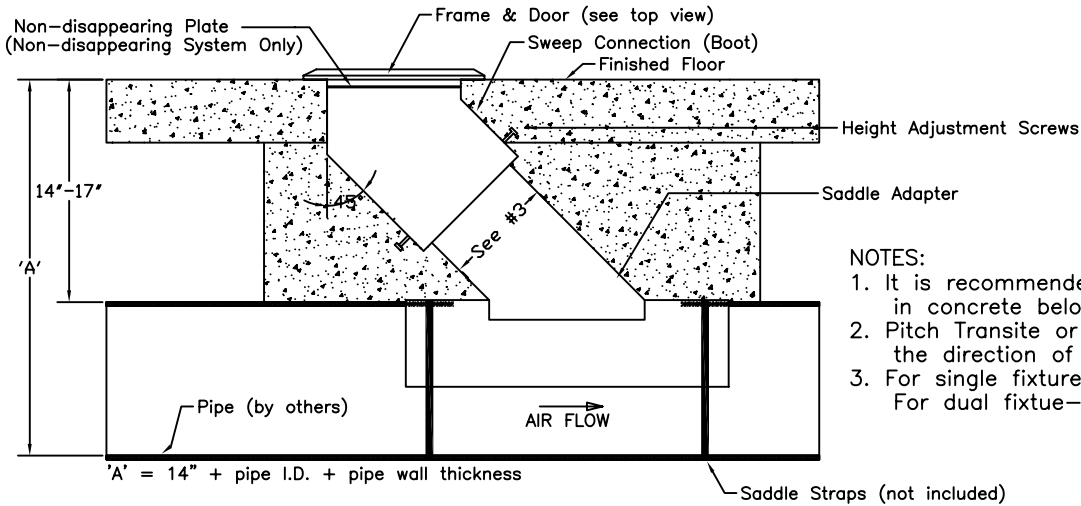


PROJECT:

LOCATION:	ENGINEER:	SALES ENGINEER:
ARCHITECT:	CONTRACTOR:	DATE:

ALL DIMENSIONS IN INCHES



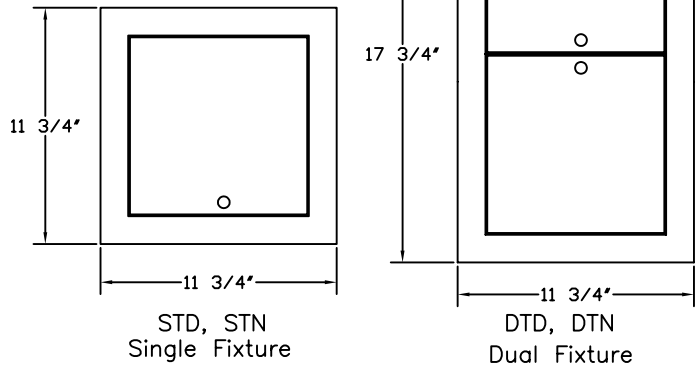
NOTES:

1. It is recommended to encase the assembly in concrete below grade.
2. Pitch Transite or PVC coated pipe 1" in 40' ft the direction of air flow for draining.
3. For single fixture—8 1/2" Dia.
For dual fixture—6 1/2" x 10"

Please specify underfloor pipe diameter when ordering.

MODEL	FLEX DIA.	MIN PIPE I.D. (1)	MIN PIPE I.D.(2)
STDA/STNA	3	8	8
STDA/STNA	4	8	10
DTDA/DTNA	3	10	10
DTDA/DTNA	4	10	12

- (1) Light Duty tubing
- (2) Heavy Duty Tubing
- SXXX / DXXX - Single or Dual Floor Fixture
- XTXX - Transite and PVC Coated Pipe
- XXDX / XXNX - Disappearing and Non disappearing
- XXXX - Aluminum Floor Plate and Door



TOP VIEW

SCHEDULE

ITEM	QTY	MODEL	PIPE DIA (D)	FLEXIBLE TUBING DIAMETER	FLEXIBLE TUBING LENGTH	REFERENCE

NOTES

Floor Plate - 1/2" 318 Cast Alum. Door - 1/4" 319 Cast Alum. or S.S.
 Options: 12 ga., 16 ga., or stainless steel boot & saddle.
 Non-disappearing floor fixture has plate mounted under door w/ hole for underfloor elbow on end of fitting.