

PROJECT:

LOCATION:

ENGINEER:

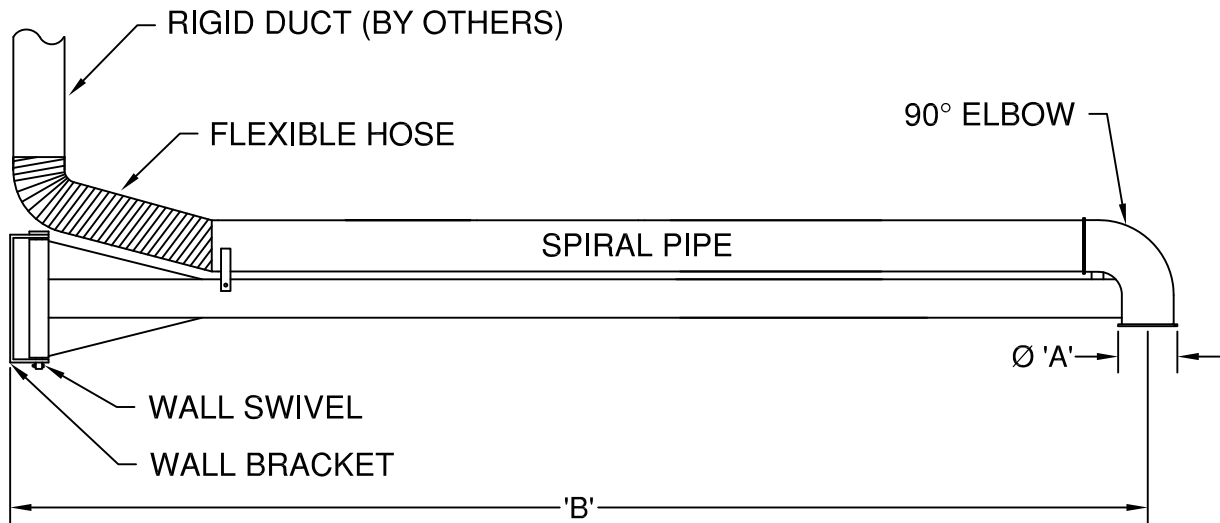
SALES ENGINEER:

ARCHITECT:

CONTRACTOR:

DATE:

MODEL	'A'	'B'
EXB6050	6"	5'
EXB8050	8"	5'
EXB10050	10"	5'
EXB6100	6"	10'
EXB8100	8"	10'
EXB10100	10"	10'



SCHEDULE

ITEM	QTY	MODEL	REFERENCE

NOTES:

- WALL MOUNT BRACKET - 1/2" STEEL WITH BLUE POWDER COATED POLYESTER FINISH.
- HORIZONTAL BEAMS - 4" x 2" x 3/16" RECTANGULAR STEEL TUBING WITH BLUE POWDER COATED POLYESTER FINISH.
- WALL SWIVEL RANGE - 180° (+/-)
- SWIVEL PINS - 1" DIAMETER STEEL.
- SPIRAL PIPE - 24 GAUGE GALVANIZED STEEL.
- FLEXIBLE HOSE - MODEL HSG FOR VEHICLE EXHAUST. NG FOR WELDING EXHAUST.
- CONSULT FACTORY FOR ALTERNATE DIAMETERS AND/OR LENGTHS.