

PROJECT:

LOCATION:

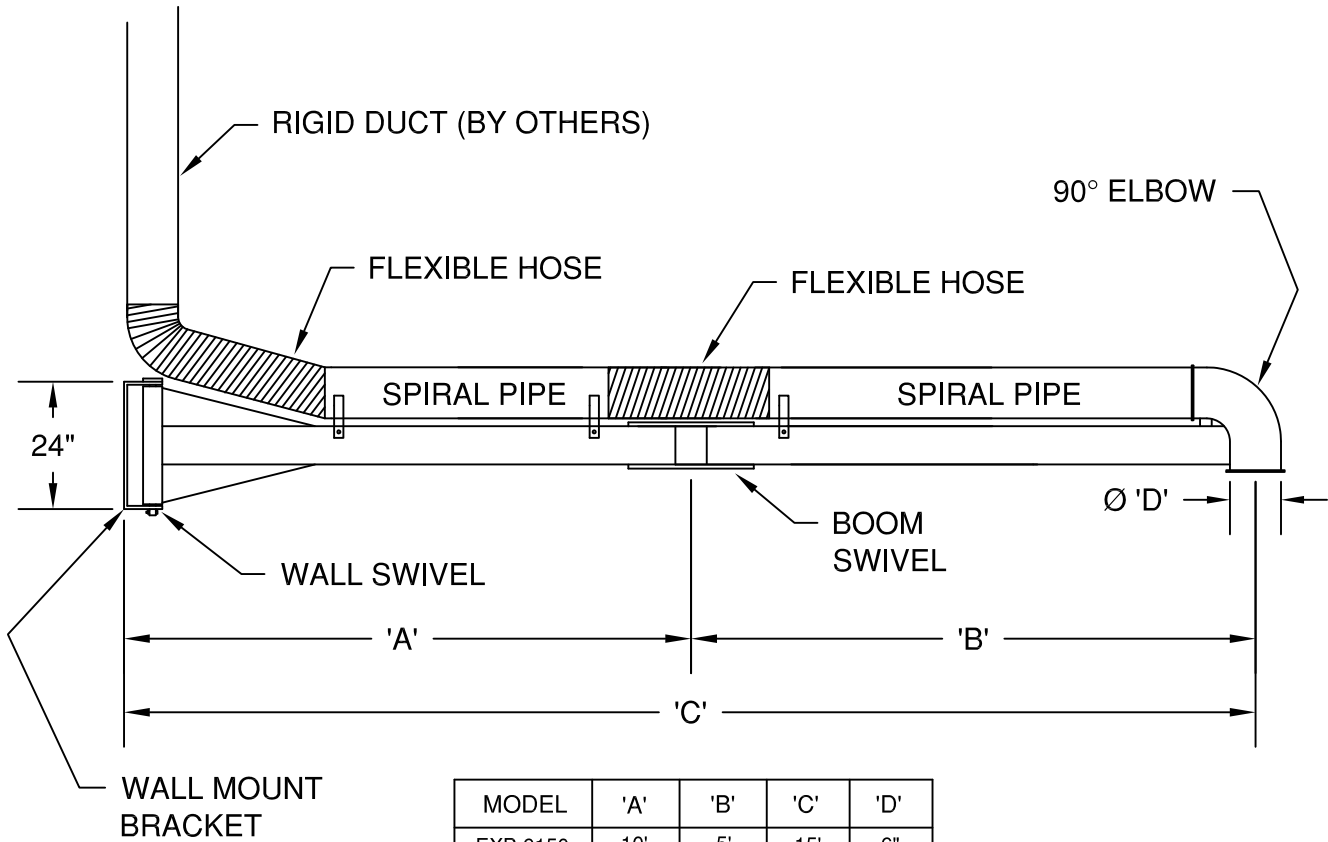
ENGINEER:

SALES ENGINEER:

ARCHITECT:

CONTRACTOR:

DATE:



MODEL	'A'	'B'	'C'	'D'
EXB 6150	10'	5'	15'	6"
EXB 8150	10'	5'	15'	8"
EXB 10150	10'	5'	15'	10"
EXB 6200	10'	10'	20'	6"
EXB 8200	10'	10'	20'	8"
EXB 10200	10'	10'	20'	10"

SCHEDULE

ITEM	QTY	MODEL	REFERENCE

NOTES:

- WALL MOUNT BRACKET - 1/2 STEEL WITH BLUE POWDER COATED POLYESTER FINISH.
- HORIZONTAL BEAMS - 5 x 2 x 3/16 AND 4 x 2 x 3/16 RECTANGULAR STEEL TUBING WITH BLUE POWDER COATED POLYESTER FINISH.
- WALL SWIVEL RANGE - 180° (+/-)
- BOOM SWIVEL RANGE - 270° (+/-)
- SWIVEL PINS - 1" DIAMETER STEEL.
- SPIRAL PIPE - 24 GAUGE GALVANIZED STEEL.
- FLEXIBLE HOSE - MODEL HSG.
- CONSULT FACTORY FOR ALTERNATE DIAMETERS AND/OR LENGTHS.