

PROJECT:

LOCATION:

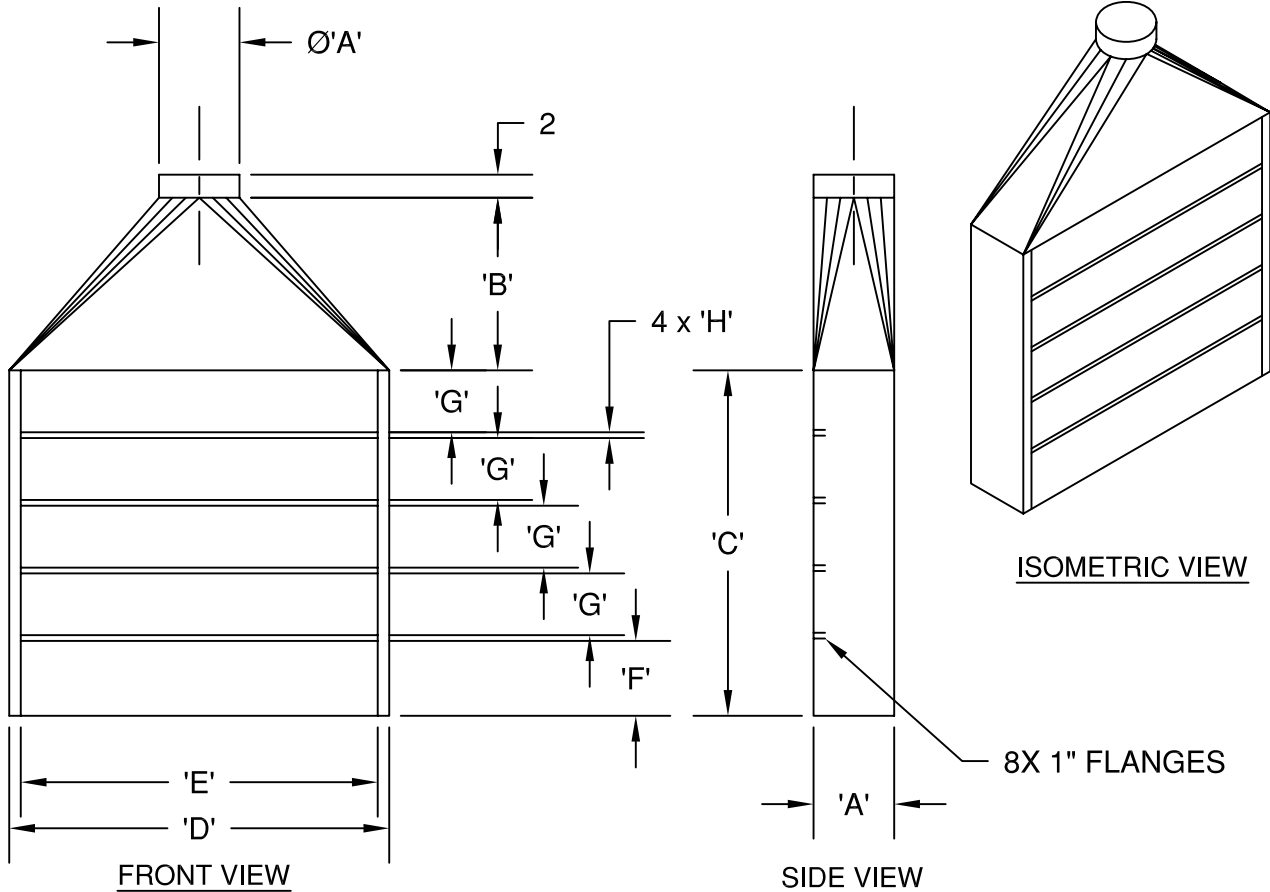
ENGINEER:

SALES ENGINEER:

ARCHITECT:

CONTRACTOR:

DATE:



MODEL	AIRFLOW*	'A'	'B'	'C'	'D'	'E'	'F'	'G'	'H'
FEH 3	800 CFM	7	15	30	33	31	6-1/2	5-3/8	7/16
FEH 4	1000 CFM	8	20-1/2	34	45	43	6-1/2	6-3/8	13/32
FEH 5	1200 CFM	8	26-1/2	37	57	55	7-1/2	6-7/8	3/8

SCHEDULE

ITEM	QTY	MODEL	REFERENCE

NOTES:

ALL DIMENSIONS IN INCHES.

EACH SLOTTED HOOD BASE SHALL BE CONSTRUCTED OF FORMED 18 GAUGE GALVANIZED STEEL.

TRANSITIONS ARE CONSTRUCTED OF 20 GAUGE GALVANIZED STEEL.

STAINLESS STEEL HOODS ARE AVAILABLE UPON REQUEST.

PRESSURE LOSS ON ABOVE HOODS IS 1.5" W.G. AT RECOMMENDED AIR FLOW.

*RECOMMENDED MINIMUM AIRFLOW