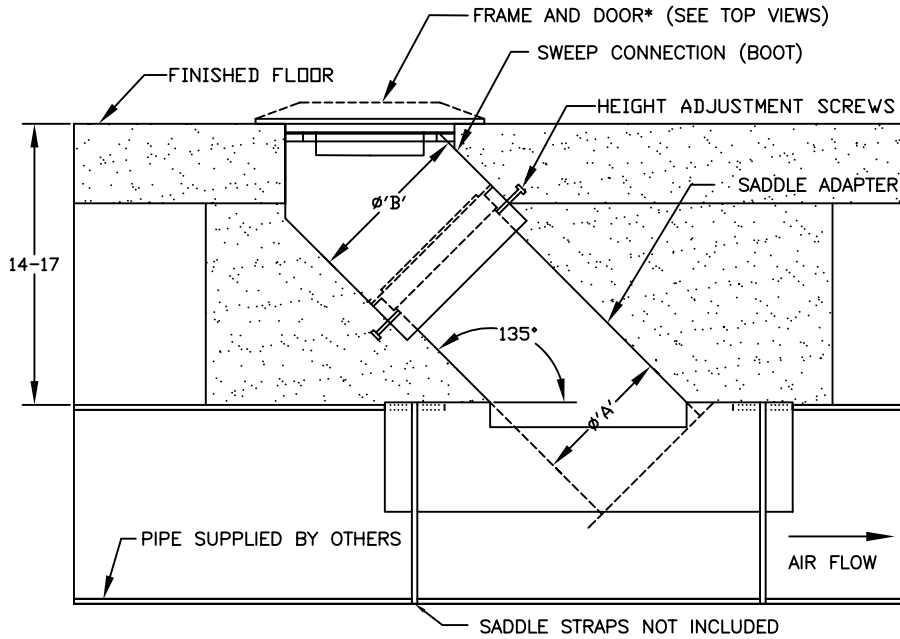
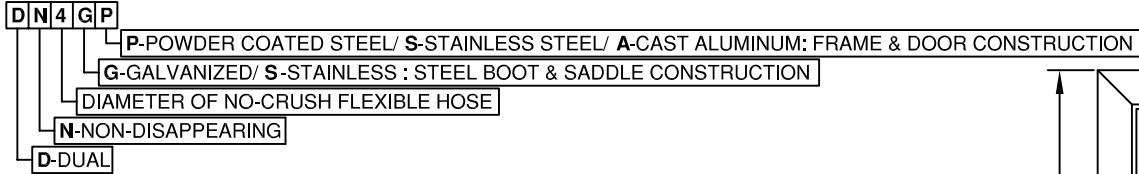


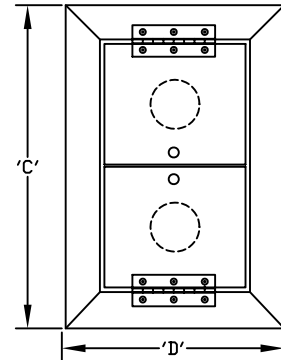
PROJECT:

LOCATION:	ENGINEER:	SALES ENGINEER:
ARCHITECT:	CONTRACTOR:	DATE:

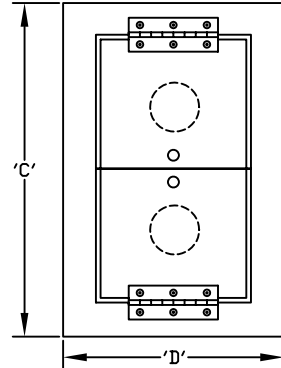
MODEL DESIGNATION



FRONT VIEW- ASSEMBLY



TOP VIEW - ALUMINUM FRAME & DOOR



TOP VIEW - STEEL FRAME & DOOR

MODEL	HOSE DIA.	'A'	'B'	'C'	'D'	MIN PIPE DIA.
DN3GP/ DN3GS/ DN3GA/ DN3SP/ DN3SS/ DN3SA	3	6	8.5	17.75	12.00	12
DN4GP/ DN4GS/ DN4GA/ DN4SP/ DN4SS/ DN4SA	4	6	8.5	17.75	12.00	12
DN5GP/ DN5GS/ DN5SP/ DN5SS	5	8	10.5	25.25	15.00	14
DN6GP/ DN6GS/ DN6SP/ DN6SS	6	8	10.5	25.25	15.00	14

SCHEDULE

ITEM	QTY	MODEL	REFERENCE

NOTES:

- *ALUMINUM FRAME TAPERS TO A HEIGHT OF 3/4". STEEL FRAME IS FLAT.
- FLOOR PLATE & DOOR: 1/4" POWDER COATED STEEL, 304 STAINLESS STEEL OR CAST ALUMINUM
- HINGE: CONTINUOUS 304 STAINLESS STEEL.
- BOOT & SADDLE: 20 GAUGE GALVANIZED STEEL OR 304 STAINLESS STEEL.
- ALL DIMENSIONS ARE IN INCHES
- IT IS RECOMMENDED TO ENCASE THE ASSEMBLY IN CONCRETE BELOW GRADE.
- PITCH UNDERGROUND PIPE 1" FOR EVERY 40' IN THE DIRECTION OF AIR FLOW FOR PROPER DRAINING.