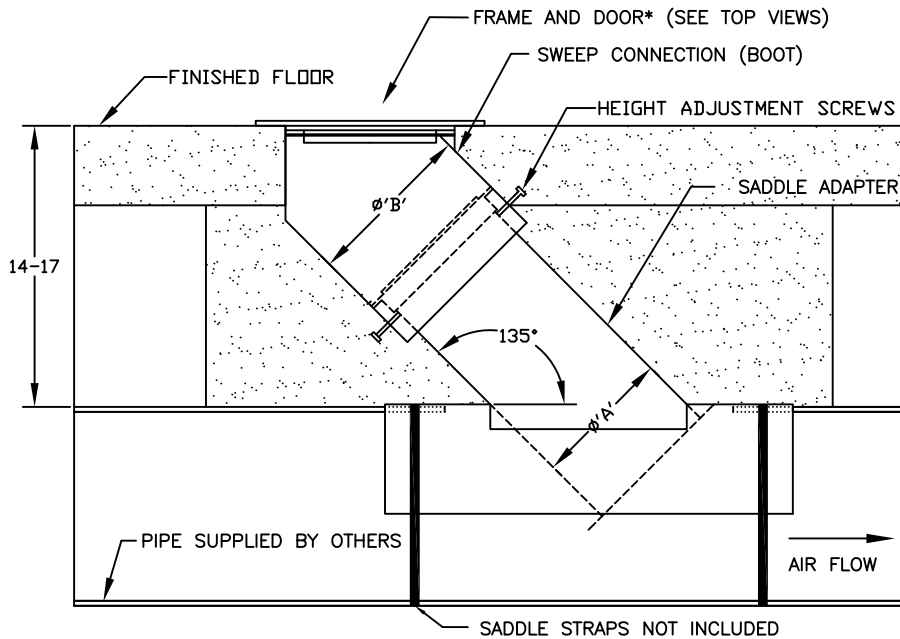
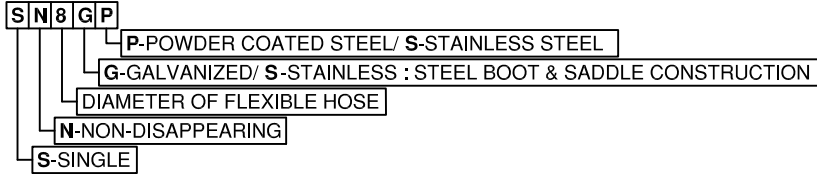


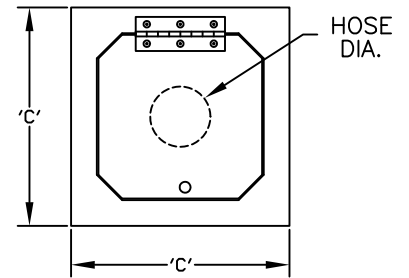
**PROJECT:**

LOCATION:	ENGINEER:	SALES ENGINEER:
ARCHITECT:	CONTRACTOR:	DATE:

**MODEL DESIGNATION**



FRONT VIEW- ASSEMBLY



TOP VIEW - STEEL FRAME & DOOR

MODEL	HOSE DIA.	'A'	'B'	'C'	MIN PIPE DIA.
SN8GP/ SN8GS/ SN8SP/ SN8SS	8	8	10.5	15.00	10

## SCHEDULE

ITEM	QTY	MODEL	REFERENCE

**NOTES:**  
 ALL DIMENSIONS ARE IN INCHES  
 FLOOR PLATE & DOOR: 1/4" POWDER COATED STEEL OR 304 STAINLESS STEEL.  
 HINGE: CONTINUOUS 304 STAINLESS STEEL.  
 BOOT & SADDLE: 20 GAUGE GALVANIZED STEEL OR 304 STAINLESS STEEL.  
 PITCH UNDERGROUND PIPE 1" FOR EVERY 40' IN THE DIRECTION OF AIR FLOW FOR PROPER DRAINING.  
 IT IS RECOMMENDED TO ENCASE THE ASSEMBLY IN CONCRETE BELOW GRADE.