

PROJECT:

LOCATION:

ENGINEER:

SALES ENGINEER:

ARCHITECT:

CONTRACTOR:

DATE:

**MODEL DESIGNATION**

**S S 4 G P**

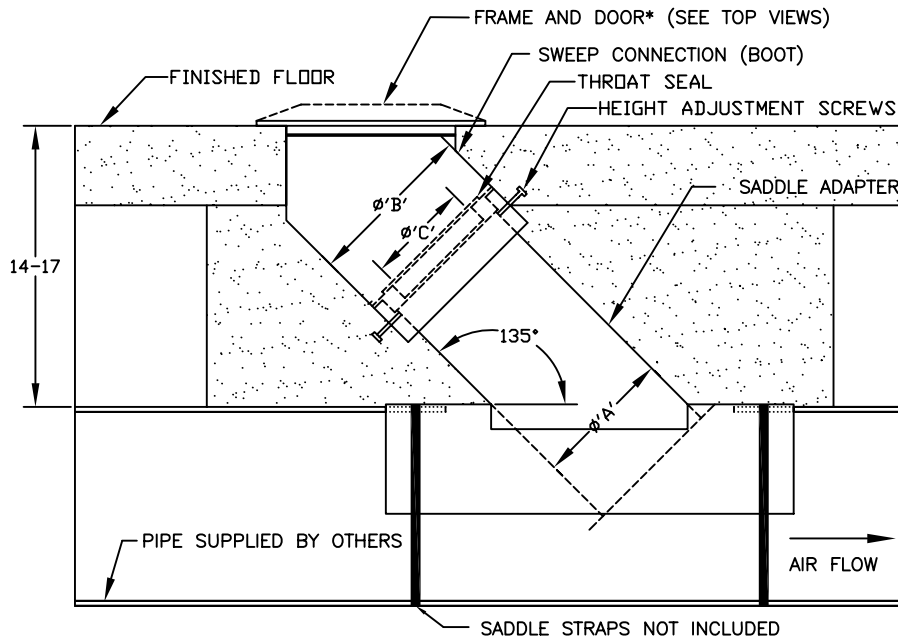
**P**-POWDER COATED STEEL/ **S**-STAINLESS STEEL/ **A**-CAST ALUMINUM; FRAME & DOOR CONSTRUCTION

**G**-GALVANIZED/ **S**-STAINLESS : STEEL BOOT & SADDLE CONSTRUCTION

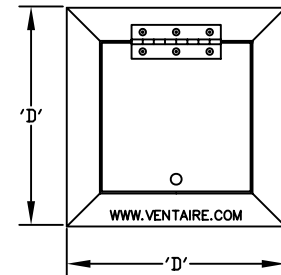
**D**-DIAMETER OF NO-CRUSH FLEXIBLE HOSE

**S**-SELF STORING

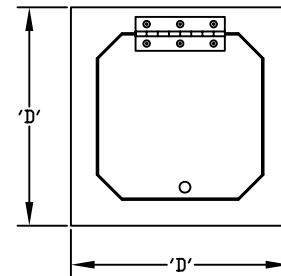
**S**-SINGLE



**FRONT VIEW- ASSEMBLY**



**TOP VIEW - ALUMINUM FRAME & DOOR**



**TOP VIEW - STEEL FRAME & DOOR**

MODEL	HOSE DIA.	'A'	'B'	'C'	'D'	MIN PIPE DIA.
SS3GP/ SS3GS/ SS3GA/ SS3SP/ SS3SS/ SS3SA	3	6	8.5	4	11.75	8
SS4GP/ SS4GS/ SS4GA/ SS4SP/ SS4SS/ SS4SA	4	6	8.5	5	11.75	8
SS5GP/ SS5GS/ SS5SP/ SS5SS	5	8	10.5	6	15.00	10
SS6GP/ SS6GS/ SS6SP/ SS6SS	6	8	10.5	7	15.00	10

## SCHEDULE

ITEM	QTY	MODEL	REFERENCE

**NOTES:**

- \*ALUMINUM FRAME TAPERS TO A HEIGHT OF 3/4". STEEL FRAME IS FLAT.
- FLOOR PLATE & DOOR: 1/4" POWDER COATED STEEL, 304 STAINLESS STEEL OR CAST ALUMINUM
- HINGE: CONTINUOUS 304 STAINLESS STEEL.
- BOOT & SADDLE: 20 GAUGE GALVANIZED STEEL OR 304 STAINLESS STEEL.
- ALL DIMENSIONS ARE IN INCHES
- IT IS RECOMMENDED TO ENCASE THE ASSEMBLY IN CONCRETE BELOW GRADE.
- PITCH UNDERGROUND PIPE 1" FOR EVERY 40' IN THE DIRECTION OF AIR FLOW FOR PROPER DRAINING.